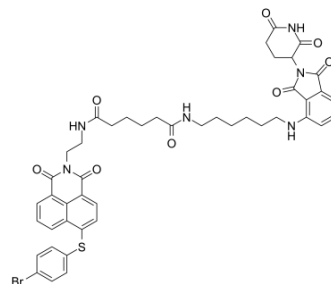


Mcl1-IN-14

Cat. No.:	HY-125877
CAS No.:	2163793-38-0
Molecular Formula:	C ₄₅ H ₄₅ BrN ₆ O ₈ S
Molecular Weight:	909.84
Target:	PROTAC; Bcl-2 Family
Pathway:	PROTAC; Apoptosis
Storage:	Please store the product under the recommended conditions in the COA.



BIOLOGICAL ACTIVITY

Description	Mcl1-IN-14 (compound C3), a proteolysis targeting chimera (PROTAC), is a potently and selectively Mcl-1 inhibitor with an IC ₅₀ of 0.78 μM. Mcl1-IN-14 induces the ubiquitination and proteasomal degradation of Mcl-1 by introducing the E3 ligase cereblon (CRBN)-binding ligand pomalidomide to Mcl-1 inhibitor S1-6 with μM-range affinity ^[1] .
IC ₅₀ & Target	Mcl-1 0.78 μM (IC ₅₀)

REFERENCES

[1]. Wang Z, et al. Proteolysis Targeting Chimeras for the Selective Degradation of Mcl-1/Bcl-2 Derived from Nonselective Target Binding Ligands. J Med Chem. 2019 Aug 21.

Caution: Product has not been fully validated for medical applications. For research use only.

Tel: 609-228-6898

Fax: 609-228-5909

E-mail: tech@MedChemExpress.com

Address: 1 Deer Park Dr, Suite Q, Monmouth Junction, NJ 08852, USA