

File ..1\DATA\2019\20191129\779\BIZ2019-N28-WMX5.D Tgt Mass (CHM):

Injection Date : 29 Nov 19 1:09 pm +0800 Seq. Line : 51

Sample Name : BIZ2019-N28-WMX5 Location : PL-B-08

Acq. Operator : ZJ_1432 Inj : 1

Spec. Reported : MS Integration Inj Volume : 0.5 ul

Acq. Method : D:\Chem32\1\data\2019\20191129\779\1-POS-3MIN.M

Analysis Method : D:\CHEM32\1\DATA\2019\20191129\779\1-POS-3MIN.M

Catalog No : HY-12591B Batch#56991

Method Info : Mobile Phase: A: water(0.01%TFA) B:ACN(0.01%TFA)

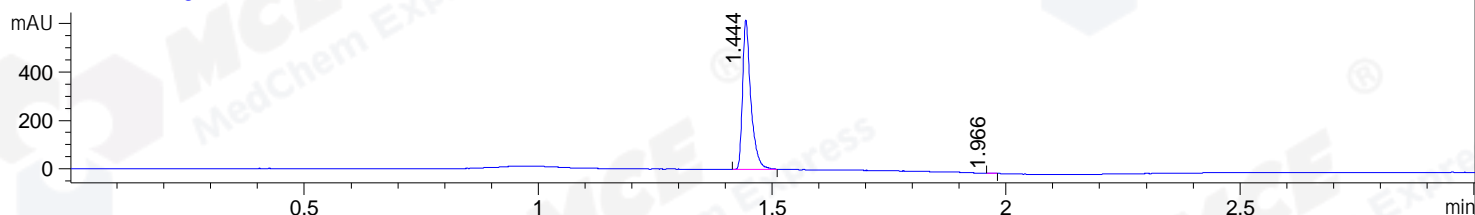
Gradient: 5% to 95%B within 1.3 min

Flow Rate :1.8ml/min

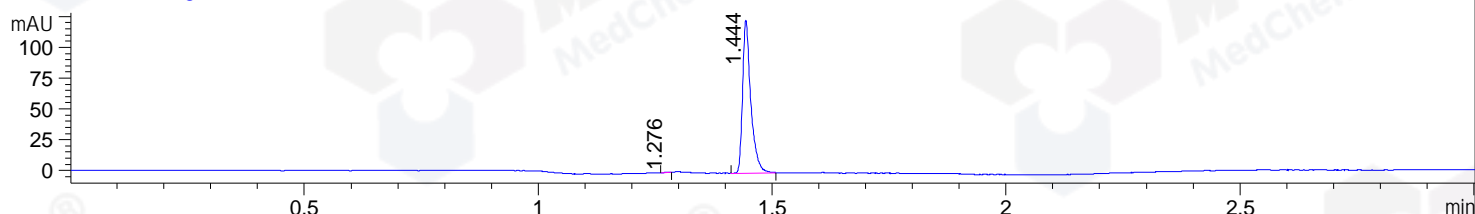
Column :SunFire C18, 4.6*50mm,3.5um A-RP-433

Oven Temperature : 45

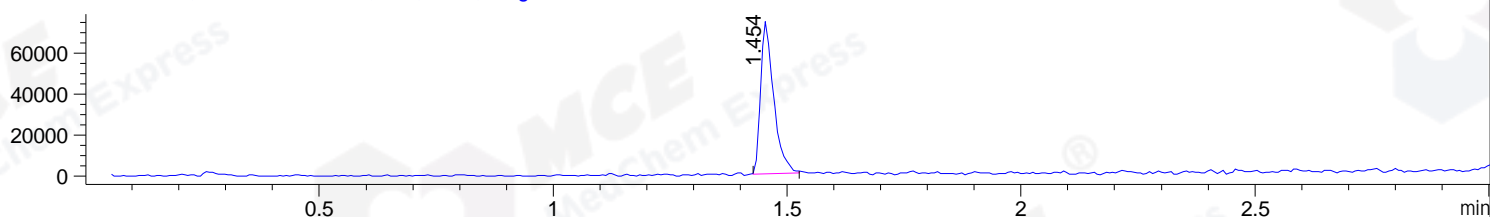
DAD1 B, Sig=214,4 Ref=off



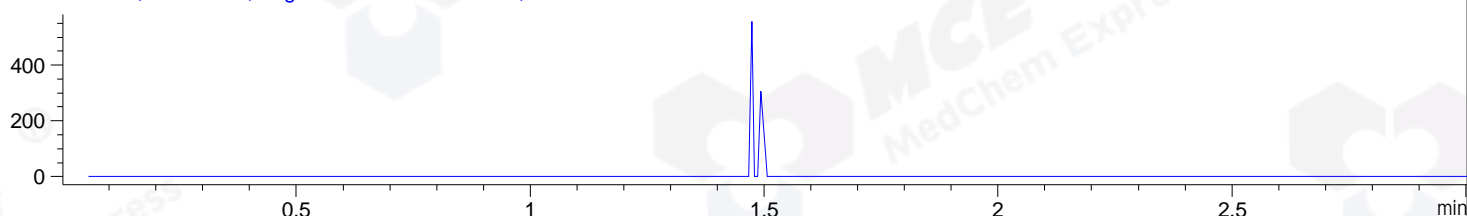
DAD1 C, Sig=254,4 Ref=off



MSD1 TIC, MS File ES-API, Pos, Scan, Frag: 70



Ion 318, MSD1 318, Target Mass 317 +H Positive, EIC=317.7:318.7



Integration Results for DAD1 B, Sig=214,4 Ref=off

RetTim	Width	Area	Height	Area%	MS (+)
1.44	0.02	757.77	616.42	99.93	281
1.97	0.01	0.52	0.84	0.07	ND

Integration Results for DAD1 C, Sig=254,4 Ref=off

RetTim	Width	Area	Height	Area%	MS (+)
1.28	0.01	0.13	0.24	0.09	ND
1.44	0.02	151.73	124.19	99.91	281

Integration Results for MSD1 TIC, MS File

RetTim	Width	Area	Height	Area%	MS (+)
1.45	0.03	145914.05	74247.47	100.00	281

Ret. Time: 1.45

<<<< POSITIVE SPECTRA >>>>

ES-API Positive

