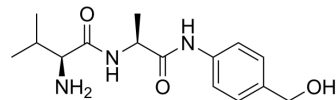


Val-Ala-PAB

Cat. No.:	HY-125933
CAS No.:	1343476-44-7
Molecular Formula:	C ₁₅ H ₂₃ N ₃ O ₃
Molecular Weight:	293.36
Target:	ADC Linker
Pathway:	Antibody-drug Conjugate/ADC Related
Storage:	Please store the product under the recommended conditions in the Certificate of Analysis.



BIOLOGICAL ACTIVITY

Description

Val-Ala-PAB is a cleavable ADC linker that can be used for ADCs synthesis^[1].

REFERENCES

[1]. Cox N, et al. Integrin-Targeting Knottin Peptide-Drug Conjugates Are Potent Inhibitors of Tumor Cell Proliferation. *Angew Chem Int Ed Engl.* 2016 Aug 16;55(34):9894-7.

Caution: Product has not been fully validated for medical applications. For research use only.

Tel: 609-228-6898

Fax: 609-228-5909

E-mail: tech@MedChemExpress.com

Address: 1 Deer Park Dr, Suite Q, Monmouth Junction, NJ 08852, USA