

## ML233

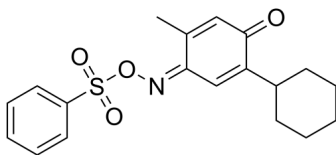
---

Cat. No.: HY-125976  
Batch No.: 392224  
CAS No.: 2080311-92-6  
Molecular Formula: C<sub>19</sub>H<sub>21</sub>NO<sub>4</sub>S

### ANALYTICAL DATA

Theoretical: C(63.49)、H(5.89)、N(3.89)  
Result: C(63.37)、H(5.74)、N(3.77)

Chemical Structure:



**Caution: Product has not been fully validated for medical applications. For research use only.**

Tel: 609-228-6898

Fax: 609-228-5909

E-mail: [tech@MedChemExpress.com](mailto:tech@MedChemExpress.com)

Address: 1 Deer Park Dr, Suite Q, Monmouth Junction, NJ 08852, USA