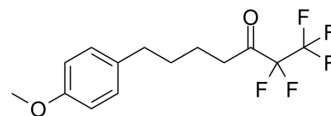


## GK187

|                           |   |       |          |
|---------------------------|---|-------|----------|
| <b>Cat. No.:</b>          | HY-125986   |       |          |
| <b>CAS No.:</b>           | 1071001-50-7  |       |          |
| <b>Molecular Formula:</b> | C <sub>14</sub> H <sub>15</sub> F <sub>5</sub> O <sub>2</sub> |       |          |
| <b>Molecular Weight:</b>  | 310.26  |       |          |
| <b>Target:</b>            | Phospholipase   |       |          |
| <b>Pathway:</b>           | Metabolic Enzyme/Protease                                     |       |          |
| <b>Storage:</b>           | Pure form   | -20°C | 3 years  |
|                           |   | 4°C   | 2 years  |
|                           | In solvent  | -80°C | 6 months |
|                           |   | -20°C | 1 month  |



### SOLVENT & SOLUBILITY

|   |  |                          |           |           |            |            |
|---|--|--------------------------|-----------|-----------|------------|------------|
| <b>In Vitro</b>   | DMSO : 100 mg/mL (322.31 mM; Need ultrasonic)  |                          |           |           |            |            |
|   |  | Solvent<br>Concentration | Mass      | 1 mg      | 5 mg       | 10 mg      |
|   | <b>Preparing Stock Solutions</b>   | 1 mM                     |           | 3.2231 mL | 16.1155 mL | 32.2310 mL |
|   |  | 5 mM                     |           | 0.6446 mL | 3.2231 mL  | 6.4462 mL  |
| 10 mM   |  |                          | 0.3223 mL | 1.6116 mL | 3.2231 mL  |            |
| Please refer to the solubility information to select the appropriate solvent. |  |                          |           |           |            |            |
| <b>In Vivo</b>  | <ol style="list-style-type: none"> <li>Add each solvent one by one: 10% DMSO &gt;&gt; 40% PEG300 &gt;&gt; 5% Tween-80 &gt;&gt; 45% saline<br/>Solubility: ≥ 2.5 mg/mL (8.06 mM); Clear solution</li> <li>Add each solvent one by one: 10% DMSO &gt;&gt; 90% (20% SBE-β-CD in saline)<br/>Solubility: ≥ 2.5 mg/mL (8.06 mM); Clear solution</li> <li>Add each solvent one by one: 10% DMSO &gt;&gt; 90% corn oil<br/>Solubility: ≥ 2.5 mg/mL (8.06 mM); Clear solution</li> </ol> |                          |           |           |            |            |

### BIOLOGICAL ACTIVITY

|                                     |  |
|-------------------------------------|--|
| <b>Description</b>                  | GK187 is a potent and selective Group VIA calcium-independent phospholipase A <sub>2</sub> (GVIA iPLA <sub>2</sub> ) inhibitor with an X <sub>I</sub> (50) value of 0.0001. GK187 can be used for researching various neurological disorders <sup>[1]</sup> .<br>[The X <sub>I</sub> (50) is the mole fraction of the inhibitor in the total substrate interface required to inhibit the enzyme by 50%.] |
| <b>IC<sub>50</sub> &amp; Target</b> | X <sub>I</sub> (50): 0.0001 (GVIA iPLA <sub>2</sub> ) <sup>[1]</sup>   |

---

## REFERENCES

---

[1]. Magrioti V, et al. New potent and selective polyfluoroalkyl ketone inhibitors of GVIA calcium-independent phospholipase A2. *Bioorg Med Chem*. 2013 Sep 15;21(18):5823-9.

---

**Caution: Product has not been fully validated for medical applications. For research use only.**

Tel: 609-228-6898

Fax: 609-228-5909

E-mail: [tech@MedChemExpress.com](mailto:tech@MedChemExpress.com)

Address: 1 Deer Park Dr, Suite Q, Monmouth Junction, NJ 08852, USA