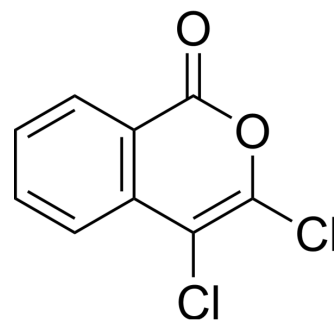


## 3,4-Dichloroisocoumarin

<b>Cat. No.:</b>	HY-126034		
<b>CAS No.:</b>	51050-59-0		
<b>Molecular Formula:</b>	C <sub>9</sub> H <sub>4</sub> Cl <sub>2</sub> O <sub>2</sub>		
<b>Molecular Weight:</b>	215.03		
<b>Target:</b>	Ser/Thr Protease		
<b>Pathway:</b>	Metabolic Enzyme/Protease		
<b>Storage:</b>	Powder	-20°C	3 years
		4°C	2 years
	In solvent	-80°C	6 months
		-20°C	1 month



### SOLVENT & SOLUBILITY

#### In Vitro

DMSO : 100 mg/mL (465.05 mM; Need ultrasonic)

Concentration	Mass		
	1 mg	5 mg	10 mg
1 mM	4.6505 mL	23.2526 mL	46.5051 mL
5 mM	0.9301 mL	4.6505 mL	9.3010 mL
10 mM	0.4651 mL	2.3253 mL	4.6505 mL

Please refer to the solubility information to select the appropriate solvent.

### BIOLOGICAL ACTIVITY

#### Description

3,4-Dichloroisocoumarin is a potent serine-protease inhibitor that inhibits chymotrypsin-like activity<sup>[1]</sup>.

### REFERENCES

[1]. H Djaballah, et al. Use of serine-protease inhibitors as probes for the different proteolytic activities of the rat liver multicatalytic proteinase complex. Eur J Biochem. 1992 Oct 15;209(2):629-34.

**Caution: Product has not been fully validated for medical applications. For research use only.**

Tel: 609-228-6898

Fax: 609-228-5909

E-mail: tech@MedChemExpress.com

Address: 1 Deer Park Dr, Suite Q, Monmouth Junction, NJ 08852, USA