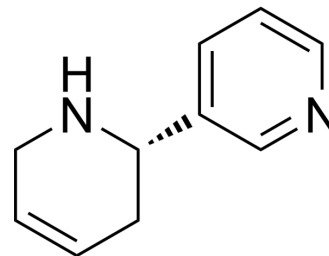


(S)-(-)-Anatabine

Cat. No.:	HY-126047
CAS No.:	581-49-7
Molecular Formula:	C ₁₀ H ₁₂ N ₂
Molecular Weight:	160.22
Target:	Others
Pathway:	Others
Storage:	Please store the product under the recommended conditions in the Certificate of Analysis.



BIOLOGICAL ACTIVITY

Description

(S)-(-)-Anatabine is a Ti plasmid mutant. (S)-(-)-Anatabine has the activity of inducing tobacco blastoma to transform into nicotinic alkaloids. (S)-(-)-Anatabine can be used in the study of biotransformation of cotyl teratoma [1].

REFERENCES

[1]. Saito K, et al. Biotransformation of nicotine alkaloids by tobacco shooty teratomas induced by a Ti plasmid mutant. Plant Cell Rep. 1989 Mar;7(8):607-10.

Caution: Product has not been fully validated for medical applications. For research use only.

Tel: 609-228-6898

Fax: 609-228-5909

E-mail: tech@MedChemExpress.com

Address: 1 Deer Park Dr, Suite Q, Monmouth Junction, NJ 08852, USA