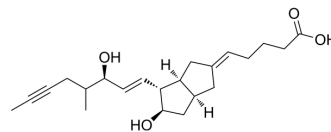


15(R)-Iloprost

Cat. No.:	HY-126069
CAS No.:	85026-51-3
Molecular Formula:	C ₂₂ H ₃₂ O ₄
Molecular Weight:	360.49
Target:	Others
Pathway:	Others
Storage:	Please store the product under the recommended conditions in the Certificate of Analysis.



BIOLOGICAL ACTIVITY

Description

15(R)-Iloprost is the unnatural or inverted C-15 epimer of Iloprost (HY-A0096)^[1].

REFERENCES

[1]. W J van der Giessen, et al. The effect of the stable prostacyclin analogue ZK 36374 on experimental coronary thrombosis in the pig. *Thromb Res.* 1984 Oct 1;36(1):45-51.

Caution: Product has not been fully validated for medical applications. For research use only.

Tel: 609-228-6898

Fax: 609-228-5909

E-mail: tech@MedChemExpress.com

Address: 1 Deer Park Dr, Suite Q, Monmouth Junction, NJ 08852, USA