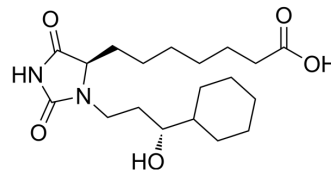


(8-epi)-BW 245C

Cat. No.:	HY-126081
CAS No.:	65705-83-1
Molecular Formula:	C ₁₉ H ₃₂ N ₂ O ₅
Molecular Weight:	368.47
Target:	Prostaglandin Receptor
Pathway:	GPCR/G Protein
Storage:	Please store the product under the recommended conditions in the Certificate of Analysis.



BIOLOGICAL ACTIVITY

Description

(8-epi)-BW 245C is the C-8 diastereomer of BW 245C (HY-101987). BW 245 C is a high affinity and selective PGD2 receptor agonist^[1].

REFERENCES

[1]. Town MH, et al. Pharmacological and cardiovascular properties of a hydantoin derivative, BW 245 C, with high affinity and selectivity for PGD2 receptors. Prostaglandins. 1983 Jan;25(1):13-28.

Caution: Product has not been fully validated for medical applications. For research use only.

Tel: 609-228-6898

Fax: 609-228-5909

E-mail: tech@MedChemExpress.com

Address: 1 Deer Park Dr, Suite Q, Monmouth Junction, NJ 08852, USA