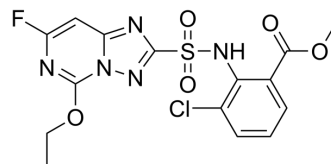


Cloransulam-methyl

Cat. No.:	HY-126176
CAS No.:	147150-35-4
Molecular Formula:	C ₁₅ H ₁₃ ClFN ₅ O ₅ S
Molecular Weight:	429.81
Target:	Acetolactate Synthase (ALS)
Pathway:	Metabolic Enzyme/Protease
Storage:	Please store the product under the recommended conditions in the Certificate of Analysis.



BIOLOGICAL ACTIVITY

Description

Cloransulam-methyl is a triazolopyrimidine sulfonamide herbicide. Cloransulam-methyl can be used to control broadleaf weeds in soybean by acetolactate synthase (ALS) inhibition^[1].

REFERENCES

[1]. Jeffrey D. Wolt, et al. Products and Kinetics of Cloransulam-methyl Aerobic Soil Metabolism. J. Agric. Food Chem. 1996, 44, 1, 324-332.

Caution: Product has not been fully validated for medical applications. For research use only.

Tel: 609-228-6898

Fax: 609-228-5909

E-mail: tech@MedChemExpress.com

Address: 1 Deer Park Dr, Suite Q, Monmouth Junction, NJ 08852, USA