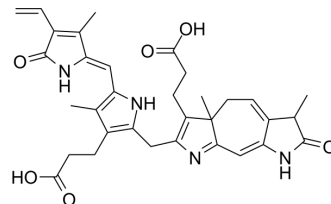


Lumirubin

Cat. No.:	HY-126196
CAS No.:	83664-21-5
Molecular Formula:	C ₃₃ H ₃₆ N ₄ O ₆
Molecular Weight:	584.66
Target:	Endogenous Metabolite
Pathway:	Metabolic Enzyme/Protease
Storage:	Please store the product under the recommended conditions in the Certificate of Analysis.



BIOLOGICAL ACTIVITY

Description	Lumirubin, a structural isomer of bilirubin, is the main photooxidative product formed during photoresearch for the research of neonatal jaundice, and has a certain pro-inflammatory effect ^[1] .
In Vitro	Lumirubin (25 μmol/L, 4 h) could consistently increase the expression of pro-inflammatory genes, TNF-α, IL-1β, IL-6 and cyclooxygenase-2 (COX-2) in CNS cells, resulting in organomegaly TNF-α production was dramatically increased in rat hippocampal slices ^[1] . MCE has not independently confirmed the accuracy of these methods. They are for reference only.

REFERENCES

[1]. J Jašprová, et al. Neuro-inflammatory effects of photodegradative products of bilirubin. Sci Rep. 2018 May 10;8(1):7444.

Caution: Product has not been fully validated for medical applications. For research use only.

Tel: 609-228-6898

Fax: 609-228-5909

E-mail: tech@MedChemExpress.com

Address: 1 Deer Park Dr, Suite Q, Monmouth Junction, NJ 08852, USA