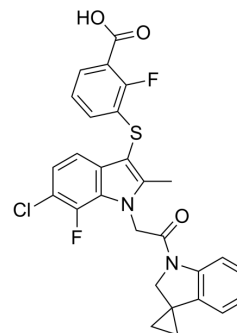


PAT-347

Cat. No.:	HY-126233
CAS No.:	1689554-51-5
Molecular Formula:	C ₂₈ H ₂₁ ClF ₂ N ₂ O ₃ S
Molecular Weight:	538.99
Target:	Phosphodiesterase (PDE)
Pathway:	Metabolic Enzyme/Protease
Storage:	Please store the product under the recommended conditions in the Certificate of Analysis.



BIOLOGICAL ACTIVITY

Description

PAT-347 is an Autotaxin (ATX) inhibitor. ATX is a secretory enzyme that hydrolyzes lysophosphatidylcholine (LPC) and regulates lysophosphatidic acid (LPA) production in the blood^{[1][2]}.

REFERENCES

[1]. Joncour A, et al. Discovery, structure–activity relationship, and binding mode of an imidazo [1, 2-a] pyridine series of autotaxin inhibitors[J]. Journal of Medicinal Chemistry, 2017, 60(17): 7371-7392.

[2]. Chen Y, et al. Design, synthesis and anti-fibrosis evaluation of imidazo [1, 2-a] pyridine derivatives as potent ATX inhibitors[J]. Bioorganic & Medicinal Chemistry, 2021, 46: 116362.

Caution: Product has not been fully validated for medical applications. For research use only.

Tel: 609-228-6898

Fax: 609-228-5909

E-mail: tech@MedChemExpress.com

Address: 1 Deer Park Dr, Suite Q, Monmouth Junction, NJ 08852, USA