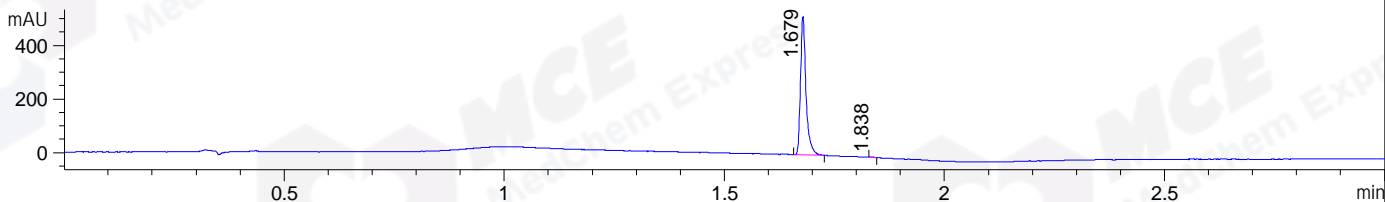
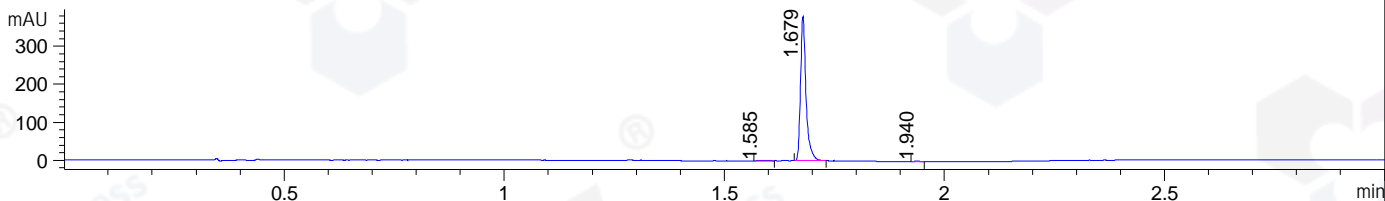


File ..\DATA\2020\20200629\1019\BIZ2020-628-SCH3.D Tgt Mass (CHM):
 Injection Date : 29 Jun 20 3:00 pm +0800 Seq. Line : 76
 Sample Name : BIZ2020-628-SCH3 Location : P1-C-05
 Acq. Operator : ZJ_1432 Inj : 1
 Spec. Reported : MS Integration Inj Volume : 1 ul
 Acq. Method : D:\Chem32\1\data\2020\20200629\1019\1-POS-3MIN.M
 Analysis Method : D:\CHEM32\1\DATA\2020\20200629\1019\1-POS-3MIN.M
 Catalog No : HY-126251
 Method Info : Mobile Phase: A: water(0.01%TFA) B:ACN(0.01%TFA)
 Gradient: 5% to 95%B within 1.3 min
 Flow Rate :1.8ml/min
 Column :SunFire C18, 4.6*50mm,3.5um A-RP-607
 Oven Temperature : 45

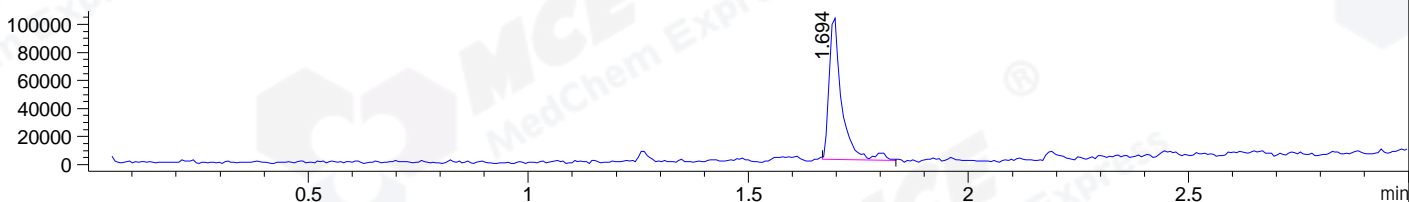
DAD1 B, Sig=214,4 Ref=off



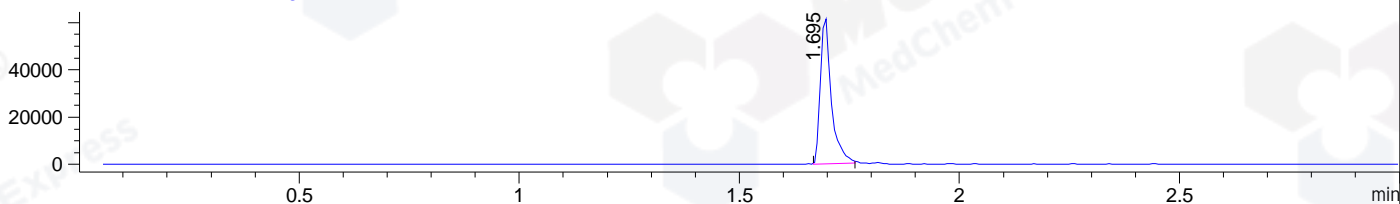
DAD1 C, Sig=254,4 Ref=off



MSD1 TIC, MS File ES-API, Pos, Scan, Frag: 70



Ion 548, MSD1 548, Target Mass 547 +H Positive, EIC=547.7:548.7



Integration Results for DAD1 B, Sig=214,4 Ref=off

RetTim	Width	Area	Height	Area%	MS (+)
1.68	0.01	449.03	517.31	99.81	548
1.84	0.01	0.84	1.41	0.19	ND

Integration Results for DAD1 C, Sig=254,4 Ref=off

RetTim	Width	Area	Height	Area%	MS (+)
1.58	0.02	2.05	1.45	0.62	ND
1.68	0.01	328.25	380.10	99.15	548
1.94	0.02	0.77	0.85	0.23	ND

Integration Results for MSD1 TIC, MS File

RetTim	Width	Area	Height	Area%	MS (+)
1.69	0.03	202574.89	102734.66	100.00	548

Ret. Time: 1.69

<<<< POSITIVE SPECTRA >>>>

ES-API Positive

