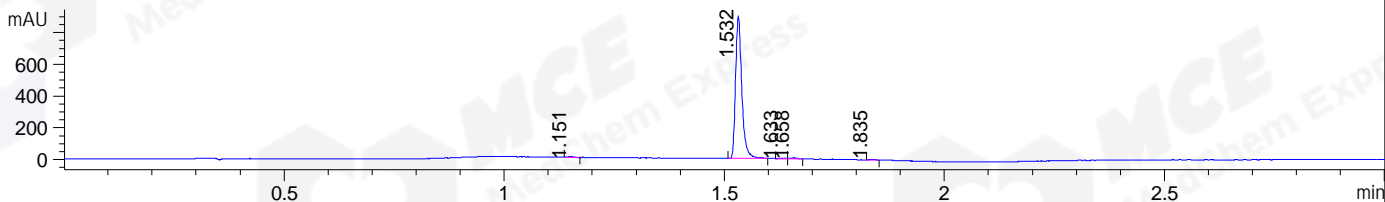
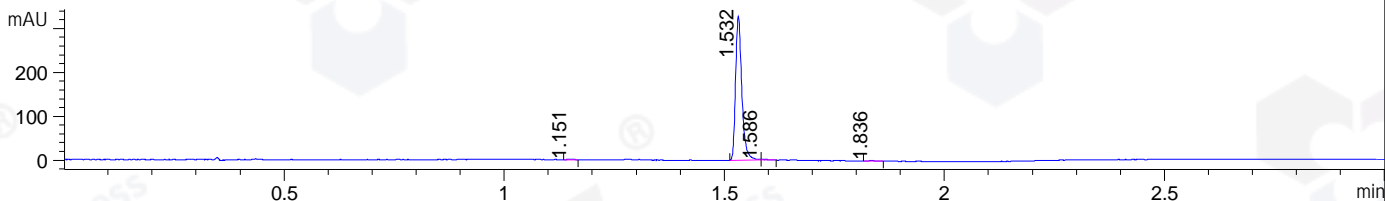


File ..\DATA\2020\20200721\1048\BIZ2020-721-WMX3.D Tgt Mass (CHM):  
 Injection Date : 21 Jul 20 4:27 pm +0800 Seq. Line : 40  
 Sample Name : BIZ2020-721-WMX3 Location : P1-F-05  
 Acq. Operator : ZJ\_1432 Inj : 1  
 Spec. Reported : MS Integration Inj Volume : 1 ul  
 Acq. Method : D:\Chem32\1\data\2020\20200721\1048\1-POS-3MIN.M  
 Analysis Method : D:\CHEM32\1\DATA\2020\20200721\1048\1-POS-3MIN.M  
 Catalog No : HY-126330  
 Method Info : Mobile Phase: A: water(0.01%TFA) B:ACN(0.01%TFA)  
 Gradient: 5% to 95%B within 1.3 min  
 Flow Rate :1.8ml/min  
 Column :SunFire C18, 4.6\*50mm,3.5um A-RP-607  
 Oven Temperature : 45□

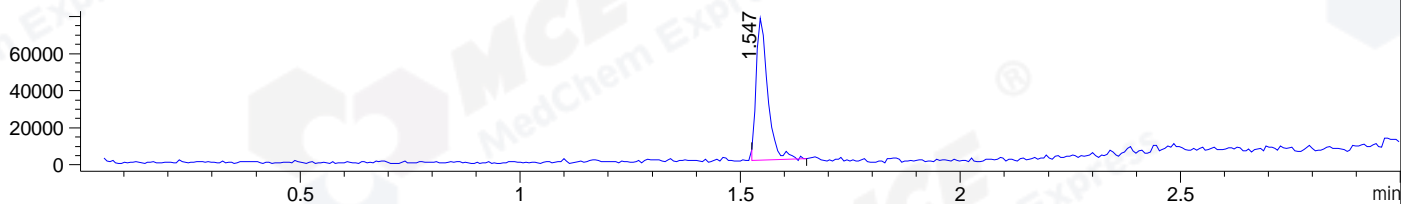
DAD1 B, Sig=214,4 Ref=off



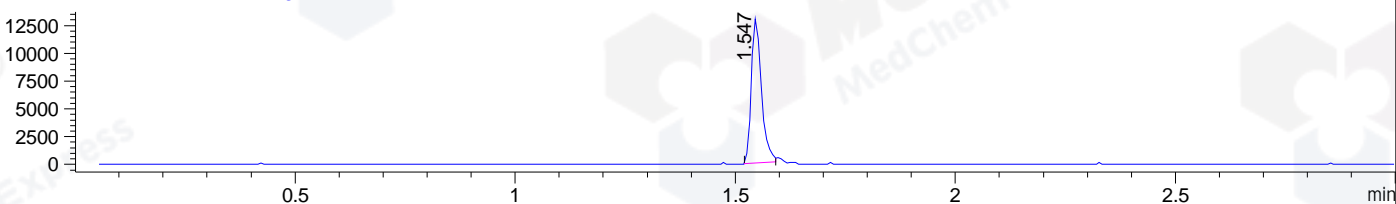
DAD1 C, Sig=254,4 Ref=off



MSD1 TIC, MS File ES-API, Pos, Scan, Frag: 70



Ion 344, MSD1 344, Target Mass 343 +H Positive, EIC=343.7:344.7



Integration Results for DAD1 B, Sig=214,4 Ref=off

RetTim	Width	Area	Height	Area%	MS (+)
1.15	0.01	3.18	4.50	0.35	ND
1.53	0.02	884.69	895.37	98.13	344
1.63	0.02	3.48	3.67	0.39	ND
1.66	0.02	6.36	6.30	0.71	ND
1.84	0.01	3.83	4.40	0.43	ND

Integration Results for DAD1 C, Sig=254,4 Ref=off

RetTim	Width	Area	Height	Area%	MS (+)
1.15	0.01	1.14	1.44	0.35	ND
1.53	0.02	324.15	328.91	98.80	344
1.59	0.02	1.61	1.63	0.49	ND
1.84	0.02	1.18	1.12	0.36	ND

Integration Results for MSD1 TIC, MS File

RetTim	Width	Area	Height	Area%	MS (+)
--------	-------	------	--------	-------	--------

1.55      0.03      139569.84      76755.02      100.00      344

Ret. Time: 1.55

<<<< POSITIVE SPECTRA >>>>

ES-API Positive

