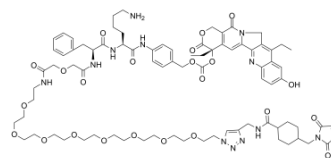


CL2-SN-38

Cat. No.:	HY-126350
CAS No.:	1036969-20-6
Molecular Formula:	C ₈₂ H ₁₀₆ N ₁₂ O ₂₃
Molecular Weight:	1627.79
Target:	Drug-Linker Conjugates for ADC
Pathway:	Antibody-drug Conjugate/ADC Related
Storage:	-20°C, sealed storage, away from moisture * In solvent : -80°C, 6 months; -20°C, 1 month (sealed storage, away from moisture)



SOLVENT & SOLUBILITY

In Vitro	DMSO : 100 mg/mL (61.43 mM; Need ultrasonic)				
		Solvent Concentration	Mass		
	Preparing Stock Solutions		1 mg	5 mg	10 mg
		1 mM	0.6143 mL	3.0716 mL	6.1433 mL
		5 mM	0.1229 mL	0.6143 mL	1.2287 mL
	10 mM	0.0614 mL	0.3072 mL	0.6143 mL	
Please refer to the solubility information to select the appropriate solvent.					
In Vivo	1. Add each solvent one by one: 10% DMSO >> 40% PEG300 >> 5% Tween-80 >> 45% saline Solubility: ≥ 2.5 mg/mL (1.54 mM); Clear solution				
	2. Add each solvent one by one: 10% DMSO >> 90% (20% SBE-β-CD in saline) Solubility: ≥ 2.5 mg/mL (1.54 mM); Clear solution				
	3. Add each solvent one by one: 10% DMSO >> 90% corn oil Solubility: ≥ 2.5 mg/mL (1.54 mM); Clear solution				

BIOLOGICAL ACTIVITY

Description	CL2-SN-38 is a part of the antibody drug conjugate (ADC), can conjugate with the anti-Trop-2-humanized antibody hRS7. SN-38 is a DNA topoisomerase I inhibitor. The anti-Trop-2 hRS7-CL2A-SN-38 ADC provides significant and specific antitumor effects against a range of human solid tumor types ^[1] .
IC₅₀ & Target	Camptothecins

REFERENCES

[1]. Cardillo TM, et al. Humanized anti-Trop-2 IgG-SN-38 conjugate for effective treatment of diverse epithelial cancers: preclinical studies in human cancer xenograft models and monkeys. Clin Cancer Res. 2011 May 15;17(10):3157-69.

Caution: Product has not been fully validated for medical applications. For research use only.

Tel: 609-228-6898

Fax: 609-228-5909

E-mail: tech@MedChemExpress.com

Address: 1 Deer Park Dr, Suite Q, Monmouth Junction, NJ 08852, USA