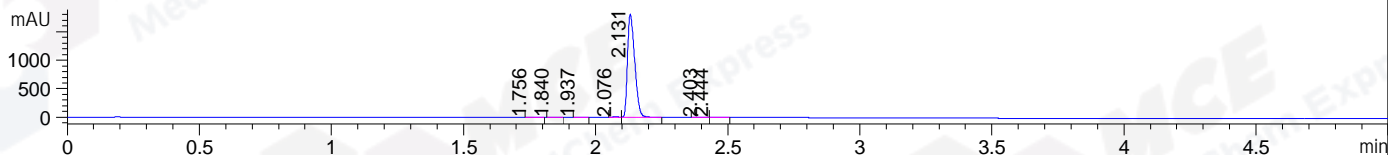
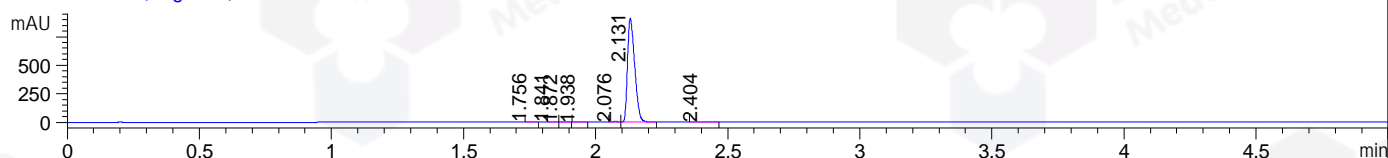


File ..0201127 2020-11-27 13-11-16\JXY8488-018-1.D Tgt Mass (CHM):  
 Injection Date : 27 Nov 20 1:20 pm +0800 Seq. Line : 3  
 Sample Name : JXY8488-018-1 Location : P2-B-02  
 Acq. Operator : SYSTEM Inj : 1  
 Spec. Reported : MS Integration Inj Volume : 0.2 ul  
 Acq. Method : D:\LCMS03\Data\20201127\20201127 2020-11-27 13-11-16\1-POS-UPLC5.0MIN(0.8ML)  
 Analysis Method : D:\LCMS03\Data\20201127\20201127 2020-11-27 13-11-16\1-POS-UPLC5.0MIN(0.8ML) -  
 CAS NO. : 1036969-20-6  
 Method Info : Mobile Phase: A: water(0.01%TFA) B:ACN(0.01%TFA)  
 Gradient: 5% to 95%B within 3 min  
 Flow Rate :0.8ml/min  
 Column :Poroshell 120 EC- C18, 2.1\*50mm,1.9um A-RP-530  
 Oven Temperature : 45C

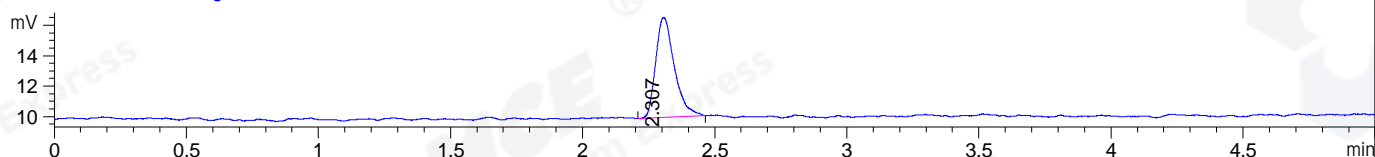
DAD1 A, Sig=214,4 Ref=off



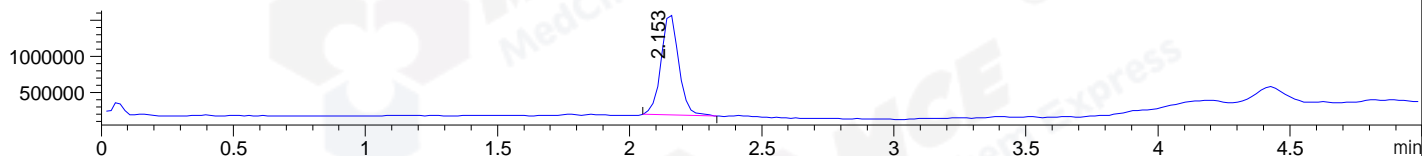
DAD1 B, Sig=254,4 Ref=off



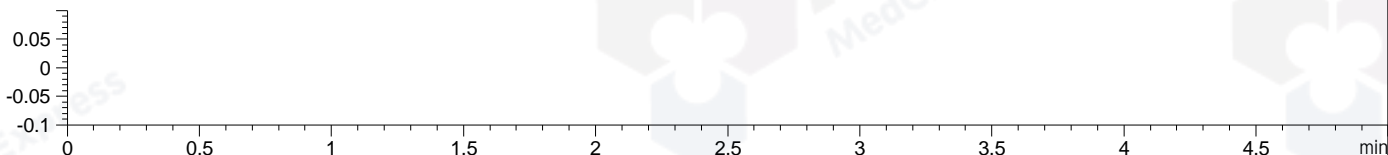
ELS1 A, ELSD Signal



MSD1 TIC, MS File ES-API, Pos, Scan, Frag: 70



Ion 1, MSD1 1, Target Mass 0 +H Positive, EIC=0.7:1.7



Integration Results for DAD1 A, Sig=214,4 Ref=off

RetTim	Width	Area	Height	Area%	MS (+)
1.76	0.02	3.03	2.33	0.09	622
1.84	0.02	1.60	1.21	0.05	622
1.94	0.02	1.06	0.75	0.03	922
2.08	0.02	13.63	10.21	0.40	815
2.13	0.03	3419.87	1804.25	99.29	815
2.40	0.04	3.00	1.20	0.09	922
2.44	0.05	2.18	0.74	0.06	922

Integration Results for DAD1 B, Sig=254,4 Ref=off

RetTim	Width	Area	Height	Area%	MS (+)
1.76	0.02	1.26	1.03	0.07	622
1.84	0.03	0.97	0.62	0.06	622
1.87	0.03	0.74	0.38	0.04	622
1.94	0.02	0.48	0.32	0.03	922
2.08	0.02	7.37	5.67	0.43	615
2.13	0.03	1714.21	909.49	99.28	815
2.40	0.04	1.59	0.61	0.09	922

## Integration Results for ELS1 A, ELSD Signal

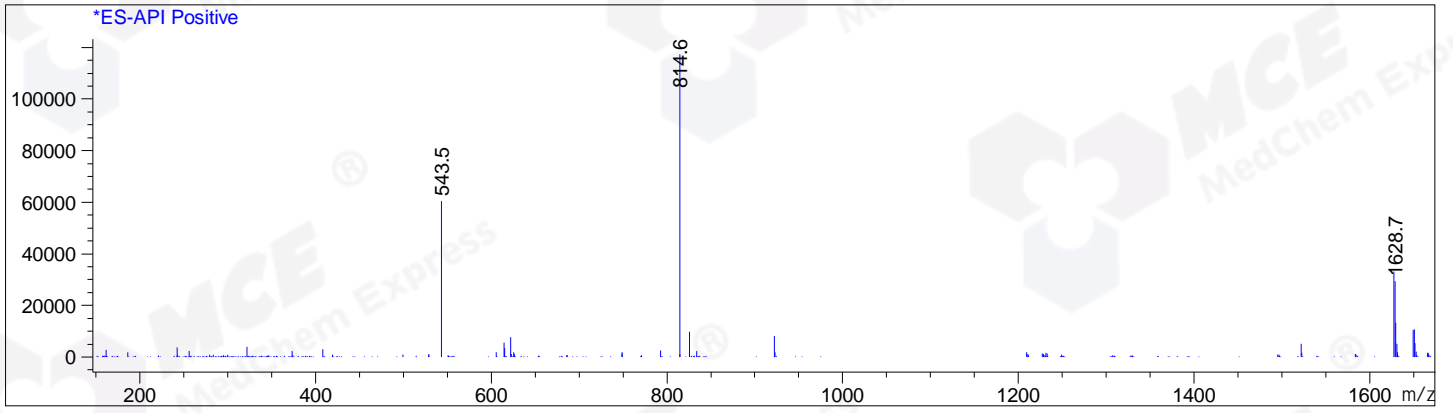
RetTim	Width	Area	Height	Area%	MS (+)
2.31	0.07	32.31	6.57	100.00	922

## Integration Results for MSD1 TIC, MS File

RetTim	Width	Area	Height	Area%	MS (+)
2.15	0.07	6431101.50	1429244.88	100.00	815

Ret. Time: 2.15

<<<< POSITIVE SPECTRA >>>>



\*\*\* End of Report \*\*\*