

## SN-38 glucuronide

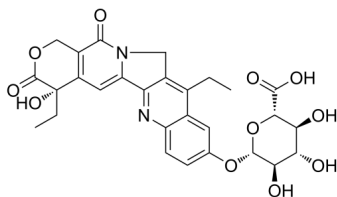
---

Cat. No.: HY-126373  
Batch No.: 269336  
CAS No.: 121080-63-5  
Molecular Formula: C<sub>28</sub>H<sub>28</sub>N<sub>2</sub>O<sub>11</sub>

### ANALYTICAL DATA

Theoretical: C(59.15%)、H(4.96%)、N(4.93%)  
Result: C(57.50%)、H(5.18%)、N(4.84%)

Chemical Structure:



**Caution: Product has not been fully validated for medical applications. For research use only.**

Tel: 609-228-6898

Fax: 609-228-5909

E-mail: [tech@MedChemExpress.com](mailto:tech@MedChemExpress.com)

Address: 1 Deer Park Dr, Suite Q, Monmouth Junction, NJ 08852, USA