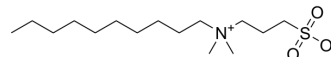


## Sulfobetaine 10

Cat. No.:	HY-126377
CAS No.:	15163-36-7
Molecular Formula:	C <sub>15</sub> H <sub>33</sub> NO <sub>3</sub> S
Molecular Weight:	307.49
Target:	Biochemical Assay Reagents
Pathway:	Others
Storage:	4°C, sealed storage, away from moisture * In solvent : -80°C, 6 months; -20°C, 1 month (sealed storage, away from moisture)



### BIOLOGICAL ACTIVITY

<b>Description</b>	Sulfobetaine 10, is a zwitterionic surfactant commonly used in biochemistry and biophysics. It is commonly used to dissolve membrane proteins and other hydrophobic molecules in aqueous solutions. Sulfobetaine 10 has both positively and negatively charged groups in its structure, which allows it to maintain a neutral charge in solution and reduces its tendency to denature proteins. It is considered a mild, non-denaturing surfactant and is widely used in protein research.
<b>In Vitro</b>	Sulfobetaine 10 is a biochemical reagent that can be used as a biological material or organic compound for life science related research. MCE has not independently confirmed the accuracy of these methods. They are for reference only.

**Caution: Product has not been fully validated for medical applications. For research use only.**

Tel: 609-228-6898

Fax: 609-228-5909

E-mail: tech@MedChemExpress.com

Address: 1 Deer Park Dr, Suite Q, Monmouth Junction, NJ 08852, USA