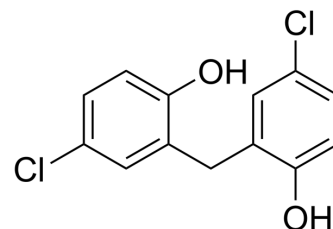


Dichlorophen

Cat. No.:	HY-12638		
CAS No.:	97-23-4		
Molecular Formula:	C ₁₃ H ₁₀ Cl ₂ O ₂		
Molecular Weight:	269.12		
Target:	Parasite; Bacterial; Fungal		
Pathway:	Anti-infection		
Storage:	Powder	-20°C	3 years
		4°C	2 years
	In solvent	-80°C	2 years
		-20°C	1 year



SOLVENT & SOLUBILITY

In Vitro

DMSO : ≥ 100 mg/mL (371.58 mM)
 H₂O : < 0.1 mg/mL (insoluble)
 * "≥" means soluble, but saturation unknown.

Preparing Stock Solutions	Solvent Concentration	Mass		
		1 mg	5 mg	10 mg
	1 mM	3.7158 mL	18.5791 mL	37.1581 mL
	5 mM	0.7432 mL	3.7158 mL	7.4316 mL
	10 mM	0.3716 mL	1.8579 mL	3.7158 mL

Please refer to the solubility information to select the appropriate solvent.

In Vivo

- Add each solvent one by one: 10% DMSO >> 40% PEG300 >> 5% Tween-80 >> 45% saline
 Solubility: ≥ 2.5 mg/mL (9.29 mM); Clear solution
- Add each solvent one by one: 10% DMSO >> 90% (20% SBE-β-CD in saline)
 Solubility: ≥ 2.5 mg/mL (9.29 mM); Clear solution
- Add each solvent one by one: 10% DMSO >> 90% corn oil
 Solubility: ≥ 2.5 mg/mL (9.29 mM); Clear solution

BIOLOGICAL ACTIVITY

Description

Dichlorophen (DDM) is an anticestodal agent. Dichlorophen is an antimicrobial agent shown to exert activity against cestodes, protozoa, fungi, and bacteria.

REFERENCES

Caution: Product has not been fully validated for medical applications. For research use only.

Tel: 609-228-6898

Fax: 609-228-5909

E-mail: tech@MedChemExpress.com

Address: 1 Deer Park Dr, Suite Q, Monmouth Junction, NJ 08852, USA