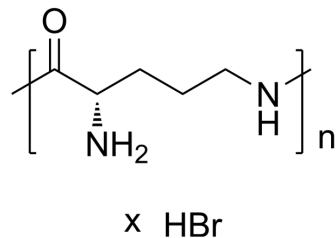


Poly-L-ornithine hydrobromide (MW 5000-15000)

Cat. No.:	HY-126436C
CAS No.:	27378-49-0
Molecular Formula:	(C ₅ H ₁₂ N ₂ O ₂) _n .xBrH
Target:	Biochemical Assay Reagents
Pathway:	Others
Storage:	Please store the product under the recommended conditions in the Certificate of Analysis.



BIOLOGICAL ACTIVITY

Description

Poly-L-ornithine (hydrobromide) (MW 5000-15000) (L-Ornithine homopolymer (hydrobromide) (MW 5000-15000)) is a biochemical reagent that can be used as a biological material or organic compound for life science related research^[1].

REFERENCES

[1]. Bergmeyer H U, et al. Biochemical reagents[M]//Methods of Enzymatic Analysis. Academic Press, 1965: 967-1037.

Caution: Product has not been fully validated for medical applications. For research use only.

Tel: 609-228-6898

Fax: 609-228-5909

E-mail: tech@MedChemExpress.com

Address: 1 Deer Park Dr, Suite Q, Monmouth Junction, NJ 08852, USA