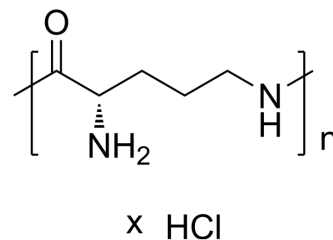


## Poly-L-ornithine hydrochloride (MW 15000-30000)

Cat. No.:	HY-126436D
CAS No.:	26982-21-8
Molecular Formula:	(C <sub>5</sub> H <sub>12</sub> N <sub>2</sub> O <sub>2</sub> ) <sub>n</sub> .xClH
Target:	Biochemical Assay Reagents
Pathway:	Others
Storage:	Please store the product under the recommended conditions in the Certificate of Analysis.



### BIOLOGICAL ACTIVITY

#### Description

Poly-L-ornithine (hydrochloride) (MW 15000-30000) (L-Ornithine homopolymer (hydrochloride) (MW 15000-30000)) is a biochemical reagent that can be used as a biological material or organic compound for life science related research<sup>[1]</sup>.

### REFERENCES

[1]. Bergmeyer H U, et al. Biochemical reagents[M]//Methods of Enzymatic Analysis. Academic Press, 1965: 967-1037.

**Caution: Product has not been fully validated for medical applications. For research use only.**

Tel: 609-228-6898

Fax: 609-228-5909

E-mail: tech@MedChemExpress.com

Address: 1 Deer Park Dr, Suite Q, Monmouth Junction, NJ 08852, USA