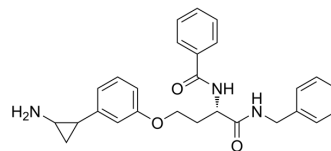


NCL1

Cat. No.:	HY-12645
CAS No.:	1196119-03-5
Molecular Formula:	C ₂₇ H ₂₉ N ₃ O ₃
Molecular Weight:	443.54
Target:	Histone Demethylase
Pathway:	Epigenetics
Storage:	Please store the product under the recommended conditions in the Certificate of Analysis.



BIOLOGICAL ACTIVITY

Description	NCL1 is a phenylcyclopropylamine (PCPA)-based Lysine-specific demethylase 1 (LSD1) inhibitor. NCL1 selectively inhibits LSD1 in preference to LSD2, with IC ₅₀ values of 2.5 and 26 μM for LSD1 and LSD2, respectively ^[1] .
IC ₅₀ & Target	LSD1 2.5 ± 0.5 μM (IC ₅₀)

REFERENCES

[1]. Kakizawa T, et al. Evaluation of phenylcyclopropylamine compounds by enzymatic assay of lysine-specific demethylase 2 in the presence of NPAC peptide. *Bioorg Med Chem Lett.* 2016 Feb 15;26(4):1193-5.

Caution: Product has not been fully validated for medical applications. For research use only.

Tel: 609-228-6898

Fax: 609-228-5909

E-mail: tech@MedChemExpress.com

Address: 1 Deer Park Dr, Suite Q, Monmouth Junction, NJ 08852, USA