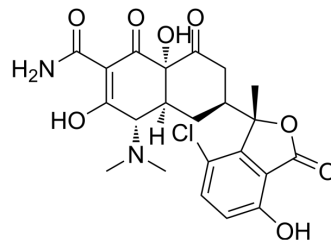


Isochlortetracycline

Cat. No.:	HY-126606
CAS No.:	514-53-4
Molecular Formula:	C ₂₂ H ₂₃ ClN ₂ O ₈
Molecular Weight:	478.88
Target:	Others
Pathway:	Others
Storage:	Please store the product under the recommended conditions in the Certificate of Analysis.



BIOLOGICAL ACTIVITY

Description

Isochlortetracycline is an inactive alkaline degradation product of the Chlortetracycline (HY-B1327A) (broad-spectrum antibiotic)^[1].

REFERENCES

[1]. Diana J, et al. Evaluation of the stability of chlortetracycline in granular premixes by monitoring its conversion into degradation products. J Pharm Biomed Anal. 2005 Sep 15;39(3-4):523-30.

Caution: Product has not been fully validated for medical applications. For research use only.

Tel: 609-228-6898

Fax: 609-228-5909

E-mail: tech@MedChemExpress.com

Address: 1 Deer Park Dr, Suite Q, Monmouth Junction, NJ 08852, USA