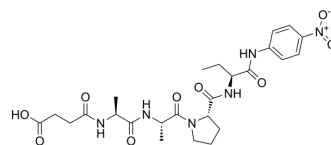


Suc-AAP-Abu-pNA

Cat. No.:	HY-126785
CAS No.:	108392-27-4
Molecular Formula:	C ₂₅ H ₃₄ N ₆ O ₉
Molecular Weight:	562.57
Sequence:	{Suc}-Ala-Ala-Pro-{Abu}-{pNA}
Sequence Shortening:	{Suc}-AAP-{Abu}-{pNA}
Target:	Elastase
Pathway:	Metabolic Enzyme/Protease
Storage:	Please store the product under the recommended conditions in the Certificate of Analysis.



BIOLOGICAL ACTIVITY

Description

Suc-AAP-Abu-pNA (Colorimetric Elastase Substrate) is a specific substrate for pancreatic elastase ($K_m = 100 \mu\text{M}$; $K_{\text{cat}}/K_m = 35,300 \text{ s}^{-1} \text{ M}^{-1}$ for rat pancreatic elastase; $K_m = 30 \mu\text{M}$; $K_{\text{cat}}/K_m = 351,000 \text{ s}^{-1} \text{ M}^{-1}$ for porcine pancreatic elastase). Suc-AAP-Abu-pNA also promotes OPC migration^[1].

REFERENCES

[1]. Largman C. Isolation and characterization of rat pancreatic elastase. *Biochemistry*. 1983 Aug 2;22(16):3763-70.

Caution: Product has not been fully validated for medical applications. For research use only.

Tel: 609-228-6898

Fax: 609-228-5909

E-mail: tech@MedChemExpress.com

Address: 1 Deer Park Dr, Suite Q, Monmouth Junction, NJ 08852, USA