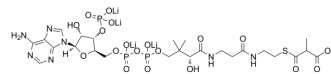


## Methylmalonyl-CoA tetralithium

Cat. No.:	HY-126791A
CAS No.:	104809-02-1
Molecular Formula:	C <sub>25</sub> H <sub>36</sub> Li <sub>4</sub> N <sub>7</sub> O <sub>19</sub> P <sub>3</sub> S
Molecular Weight:	891.34
Target:	Endogenous Metabolite
Pathway:	Metabolic Enzyme/Protease
Storage:	Please store the product under the recommended conditions in the Certificate of Analysis.



### BIOLOGICAL ACTIVITY

#### Description

Methylmalonyl-CoA (Methylmalonyl coenzyme A) tetralithium is a catabolite of valine, isoleucine, methionine, threonine, odd-chain fatty acids, and cholesterol. Methylmalonyl-CoA tetralithium is converted to succinyl-CoA by enzymatic reaction of methylmalonyl-CoA mutase (MCM) with coenzyme vitamin B12<sup>[1]</sup>.

### REFERENCES

[1]. Gotoh K, et al. Assay for methylmalonyl coenzyme A mutase activity based on determination of succinyl coenzyme A by ultrahigh-performance liquid chromatography tandem mass spectrometry. *Anal Bioanal Chem.* 2015 Jul;407(18):5281-6.

**Caution: Product has not been fully validated for medical applications. For research use only.**

Tel: 609-228-6898

Fax: 609-228-5909

E-mail: tech@MedChemExpress.com

Address: 1 Deer Park Dr, Suite Q, Monmouth Junction, NJ 08852, USA