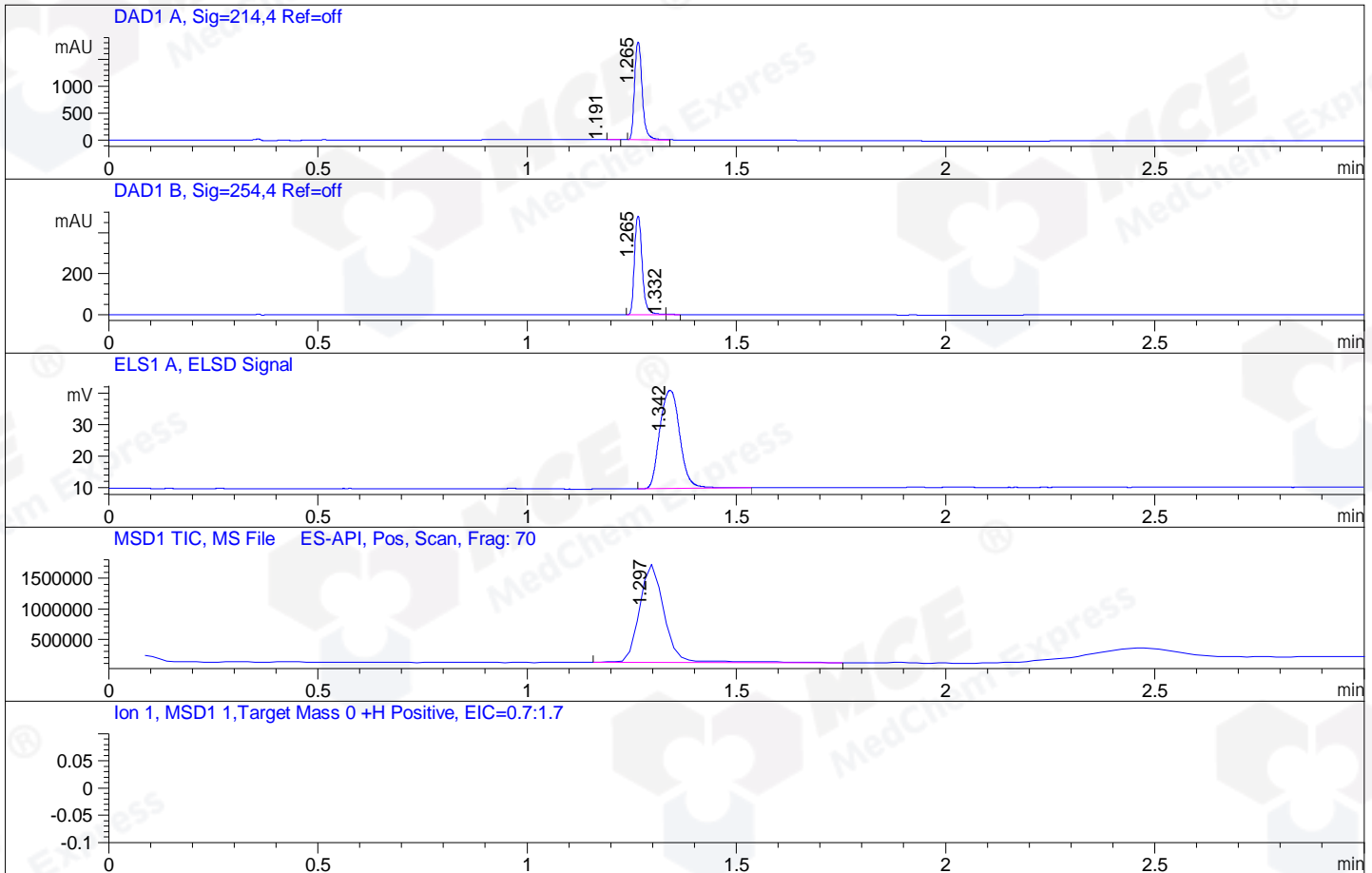


File ..\2018\20180806\20180806\CPK2018-803-18234.D Tgt Mass (CHM):  
Injection Date : 6 Aug 18 11:21 am +0800 Seq. Line : 35  
Sample Name : CPK2018-803-18234 Location : P1-C-07  
Acq. Operator : SYSTEM Inj : 1  
Spec. Reported : MS Integration Inj Volume : 1 ul  
Acq. Method : D:\LCMS03\Data\2018\20180806\20180806\1-POS-3MIN.M  
Analysis Method : D:\LCMS03\Data\2018\20180806\20180806\1-POS-3MIN.M  
Catalog No : HY-12689 Batch#18234  
Method Info : Mobile Phase: A: water(0.01%TFA) B:ACN(0.01%TFA)  
Gradient: 5% to 95%B within 1.3 min  
Flow Rate :1.8ml/min  
Column :SunFire C18, 4.6\*50mm,3.5um A-RP-186  
Oven Temperature : 45C



Integration Results for DAD1 A, Sig=214,4 Ref=off

RetTim	Width	Area	Height	Area%	MS (+)
1.19	0.02	0.63	-0.21	0.03	315
1.26	0.02	2285.40	1803.03	99.97	459

Integration Results for DAD1 B, Sig=254,4 Ref=off

RetTim	Width	Area	Height	Area%	MS (+)
1.26	0.02	615.14	479.12	99.72	459
1.33	0.02	1.75	1.42	0.28	459

Integration Results for ELS1 A, ELSD Signal

RetTim	Width	Area	Height	Area%	MS (+)
1.34	0.05	103.58	31.15	100.00	459

Integration Results for MSD1 TIC, MS File

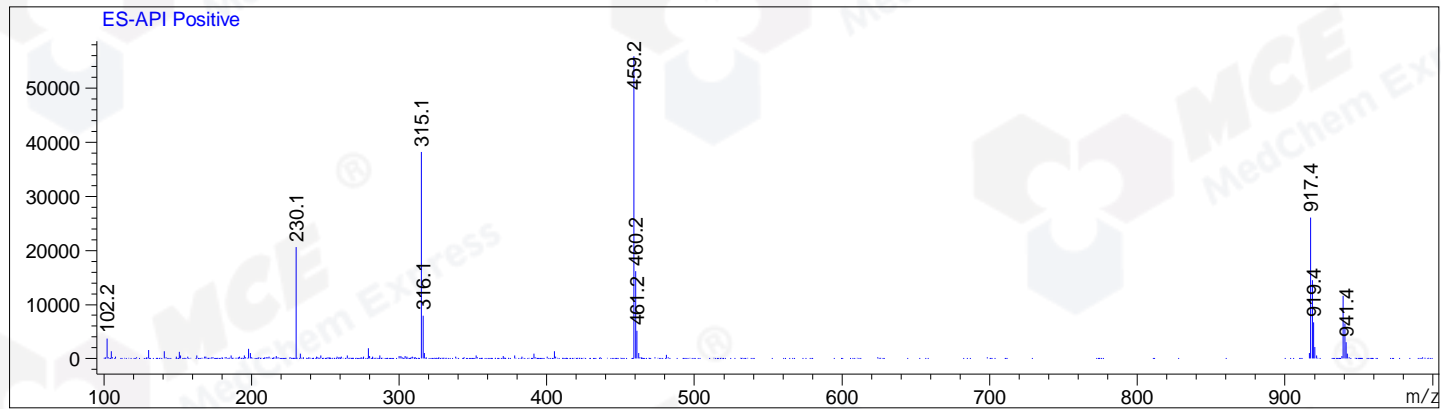
1.30      0.06      6632617.00      1610162.25      100.00      459

RetTim	Width	Area	Height	Area%	MS (+)
--------	-------	------	--------	-------	--------

-----|-----|-----|-----|-----|-----|

Ret. Time: 1.30

<<<< POSITIVE SPECTRA >>>>



\*\*\* End of Report \*\*\*