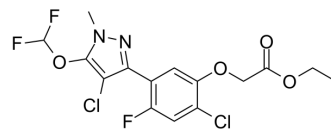


Pyraflufen-ethyl

Cat. No.:	HY-126922
CAS No.:	129630-19-9
Molecular Formula:	C ₁₅ H ₁₃ Cl ₂ F ₃ N ₂ O ₄
Molecular Weight:	413.18
Target:	Others
Pathway:	Others
Storage:	4°C, protect from light * In solvent : -80°C, 6 months; -20°C, 1 month (protect from light)



SOLVENT & SOLUBILITY

In Vitro	DMSO : 100 mg/mL (242.03 mM; Need ultrasonic and warming)						
	Preparing Stock Solutions	Solvent Concentration	Mass	1 mg	5 mg	10 mg	
				1 mM	2.4203 mL	12.1013 mL	24.2025 mL
				5 mM	0.4841 mL	2.4203 mL	4.8405 mL
				10 mM	0.2420 mL	1.2101 mL	2.4203 mL
Please refer to the solubility information to select the appropriate solvent.							
In Vivo	1. Add each solvent one by one: 10% DMSO >> 90% corn oil Solubility: ≥ 2.5 mg/mL (6.05 mM); Clear solution						
	2. Add each solvent one by one: 10% DMSO >> 40% PEG300 >> 5% Tween-80 >> 45% saline Solubility: ≥ 1.25 mg/mL (3.03 mM); Clear solution						

BIOLOGICAL ACTIVITY

Description	Pyraflufen-ethyl is a phenylpyrazole herbicide for control of annual and perennial broadleaf weeds ^[1] .
-------------	---

REFERENCES

[1]. Jose V.Fernandez, et al. Parthenium hysterophorus L. control in response to pyraflufen-ethyl application. Crop Protection, Volume 57, March 2014, Pages 35-37

Caution: Product has not been fully validated for medical applications. For research use only.

Tel: 609-228-6898

Fax: 609-228-5909

E-mail: tech@MedChemExpress.com

Address: 1 Deer Park Dr, Suite Q, Monmouth Junction, NJ 08852, USA