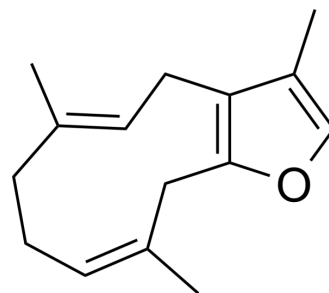


Furanodiene

Cat. No.:	HY-126940
CAS No.:	19912-61-9
Molecular Formula:	C ₁₅ H ₂₀ O
Molecular Weight:	216.32
Target:	Reactive Oxygen Species; Apoptosis; P-glycoprotein
Pathway:	Immunology/Inflammation; Metabolic Enzyme/Protease; NF-κB; Apoptosis; Membrane Transporter/Ion Channel
Storage:	-20°C, protect from light * In solvent : -80°C, 6 months; -20°C, 1 month (protect from light)



SOLVENT & SOLUBILITY

In Vitro	DMSO : 100 mg/mL (462.28 mM; ultrasonic and warming and heat to 60°C)				
		Solvent Concentration	Mass 1 mg	5 mg	10 mg
	Preparing Stock Solutions	1 mM	4.6228 mL	23.1139 mL	46.2278 mL
		5 mM	0.9246 mL	4.6228 mL	9.2456 mL
10 mM		0.4623 mL	2.3114 mL	4.6228 mL	
Please refer to the solubility information to select the appropriate solvent.					
In Vivo	1. Add each solvent one by one: 10% DMSO >> 40% PEG300 >> 5% Tween-80 >> 45% saline Solubility: ≥ 2.5 mg/mL (11.56 mM); Clear solution 2. Add each solvent one by one: 10% DMSO >> 90% corn oil Solubility: ≥ 2.5 mg/mL (11.56 mM); Clear solution				

BIOLOGICAL ACTIVITY

Description	Furanodiene is a natural terpenoid isolated from Rhizoma Curcumae. Furanodiene plays anti-cancer effects through anti-angiogenesis and inducing ROS production, DNA strand breaks and apoptosis. Furanodiene suppressed efflux transporter Pgp (P-glycoprotein) function and reduced Pgp protein level ^[1] .
In Vitro	Furanodiene (1.4, 4.1, 12.2 μM; 48 hours) is effective in treating human JF 305 pancreatic cancer cells and MCF-7 breast cancer cells xenotransplanted into the zebrafish ^[1] . Furanodiene has no effect on Pgp related gene (MDR1) expression ^[1] . MCE has not independently confirmed the accuracy of these methods. They are for reference only.

REFERENCES

[1]. Xiao-Yu Zhu, et al. Sensitization and synergistic anti-cancer effects of Furanodiene identified in zebrafish models. Sci Rep. 2019 Mar 14;9(1):4541.

Caution: Product has not been fully validated for medical applications. For research use only.

Tel: 609-228-6898

Fax: 609-228-5909

E-mail: tech@MedChemExpress.com

Address: 1 Deer Park Dr, Suite Q, Monmouth Junction, NJ 08852, USA