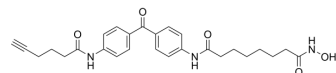


SAHA-BPyne

Cat. No.:	HY-126943
CAS No.:	930772-88-6
Molecular Formula:	C ₂₇ H ₃₁ N ₃ O ₅
Molecular Weight:	477.55
Target:	HDAC
Pathway:	Cell Cycle/DNA Damage; Epigenetics
Storage:	Please store the product under the recommended conditions in the Certificate of Analysis.



BIOLOGICAL ACTIVITY

Description

SAHA-BPyne is an activity-based protein profiling (ABPP) probe for detecting HDAC activity, which covalently labels the proximal proteins through a photoactivation. SAHA-BPyne inhibits HDAC activity in HeLa nuclear lysate with an IC₅₀ of less than 5 μM^[1].

REFERENCES

[1]. Salisbury CM, et al., Optimization of activity-based probes for proteomic profiling of histone deacetylase complexes. J Am Chem Soc. 2008 Feb 20;130(7):2184-94.

Caution: Product has not been fully validated for medical applications. For research use only.

Tel: 609-228-6898

Fax: 609-228-5909

E-mail: tech@MedChemExpress.com

Address: 1 Deer Park Dr, Suite Q, Monmouth Junction, NJ 08852, USA