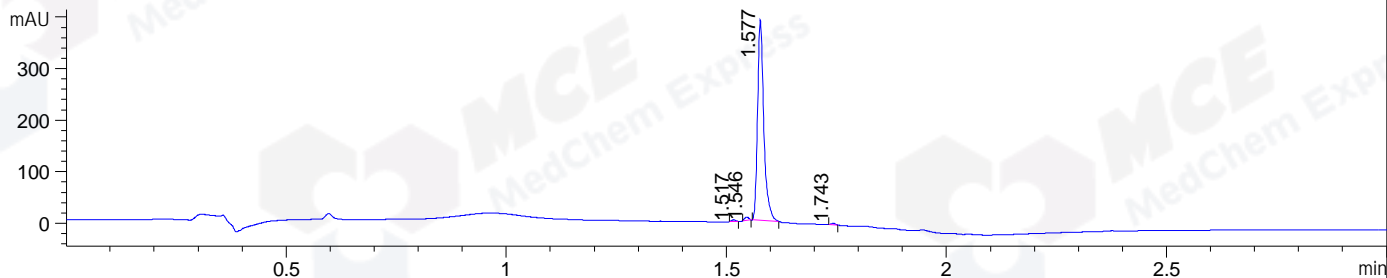
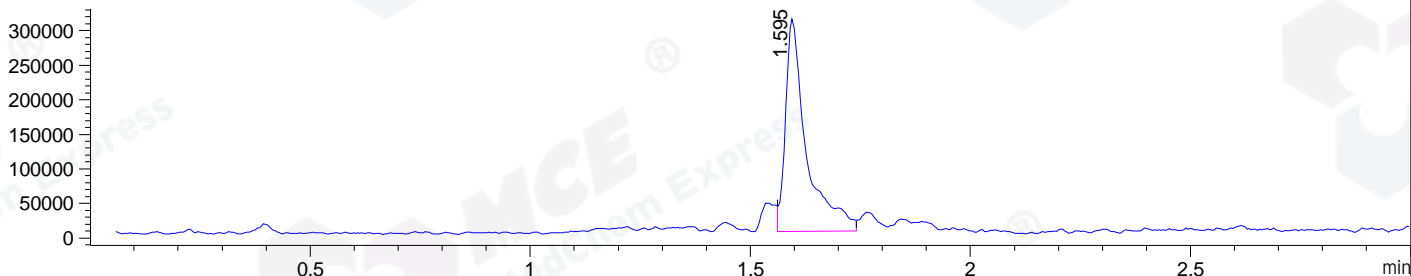


File ..DATA\2020\20200916\1108\BIZ2020-914-WMX10.D Tgt Mass (CHM):
Injection Date : 16 Sep 20 12:05 pm +0800 Seq. Line : 38
Sample Name : BIZ2020-914-WMX10 Location : P1-B-05
Acq. Operator : zyj_1547 Inj : 1
Spec. Reported : MS Integration Inj Volume : 20 ul
Acq. Method : D:\Chem32\1\data\2020\20200916\1108\1-POS-3MIN.M
Analysis Method : D:\CHEM32\1\DATA\2020\20200916\1108\1-POS-3MIN.M
Catalog No : HY-126995
Method Info : Mobile Phase: A: water(0.01%TFA) B:ACN(0.01%TFA)
Gradient: 5% to 95%B within 1.3 min
Flow Rate :1.8ml/min
Column :SunFire C18, 4.6*50mm,3.5um A-RP-624

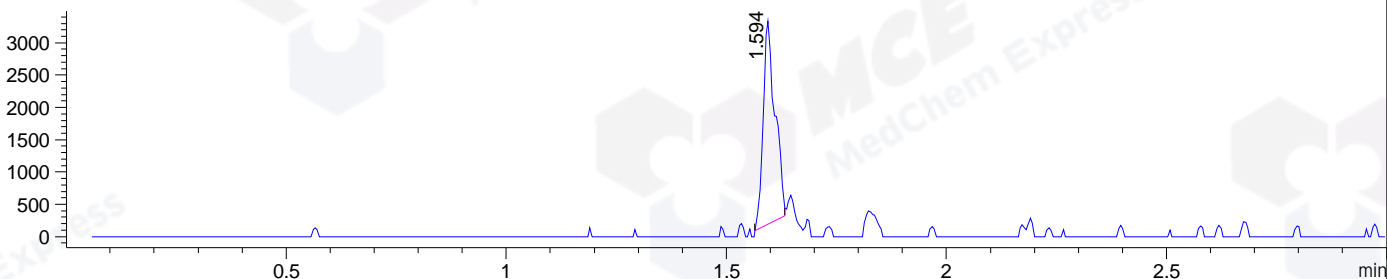
DAD1 B, Sig=214,4 Ref=off



MSD1 TIC, MS File ES-API, Pos, Scan, Frag: 70



Ion 450, MSD1 450, Target Mass 449 +H Positive, EIC=449.7:450.7



Integration Results for DAD1 B, Sig=214,4 Ref=off

| RetTim | Width | Area | Height | Area% | MS (+) |
|--------|-------|--------|--------|-------|--------|
| 1.52 | 0.01 | 1.73 | 2.94 | 0.44 | 236 |
| 1.55 | 0.01 | 4.19 | 6.55 | 1.07 | 430 |
| 1.58 | 0.02 | 382.68 | 389.39 | 98.06 | 432 |
| 1.74 | 0.01 | 1.66 | 2.44 | 0.43 | 432 |

Integration Results for MSD1 TIC, MS File

| RetTim | Width | Area | Height | Area% | MS (+) |
|--------|-------|------------|-----------|--------|--------|
| 1.60 | 0.05 | 1017956.50 | 306973.94 | 100.00 | 432 |

Ret. Time: 1.60

<<<< POSITIVE SPECTRA >>>>

ES-API Positive

