

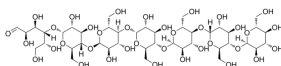
Maltoheptaose

Cat. No.: HY-127018
CAS No.: 34620-78-5
Batch No.: 315381
Chemical Name: D-Glucose, O- α -D-glucopyranosyl-(1 \rightarrow 4)-O- α -D-glucopyranosyl-(1 \rightarrow 4)-O- α -D-glucopyranosyl-(1 \rightarrow 4)-O- α -D-glucopyranosyl-(1 \rightarrow 4)-O- α -D-glucopyranosyl-(1 \rightarrow 4)-O- α -D-glucopyranosyl-(1 \rightarrow 4)-

PHYSICAL AND CHEMICAL PROPERTIES

Molecular Formula: C₄₂H₇₂O₃₆
Molecular Weight: 1153.00
Storage: 4°C, protect from light
* In solvent : -80°C, 6 months; -20°C, 1 month (protect from light)

Chemical Structure:



ANALYTICAL DATA

Appearance: White to off-white (Solid)
¹H NMR Spectrum: Consistent with structure
MS: Consistent with structure
Purity (HPLC): 99.74%
Conclusion: The product has been tested and complies with the given specifications.

Caution: Product has not been fully validated for medical applications. For research use only.

Tel: 609-228-6898

Fax: 609-228-5909

E-mail: tech@MedChemExpress.com

Address: 1 Deer Park Dr, Suite Q, Monmouth Junction, NJ 08852, USA