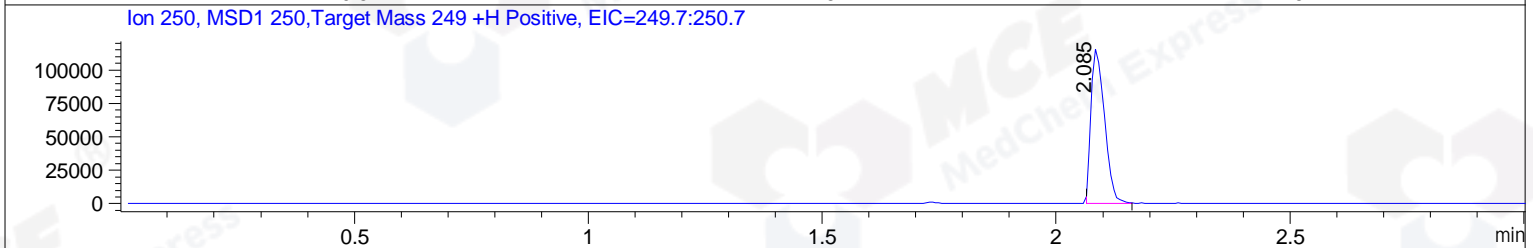
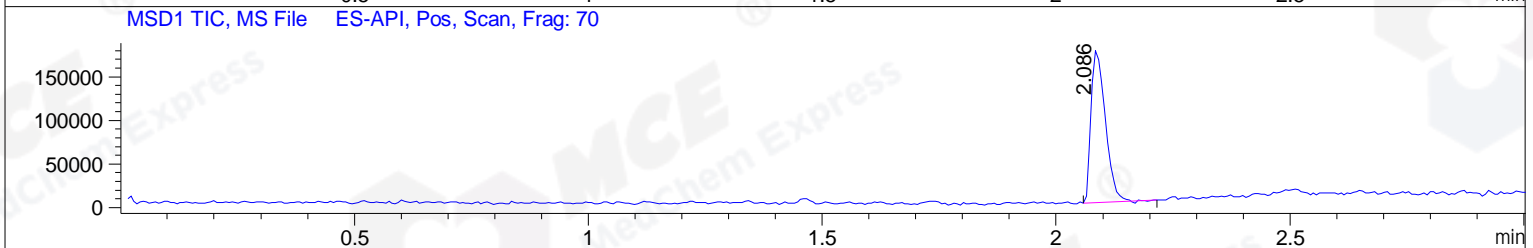
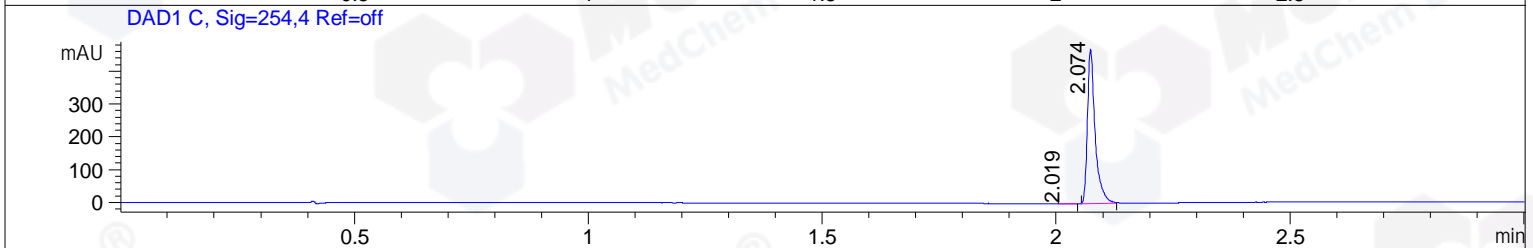
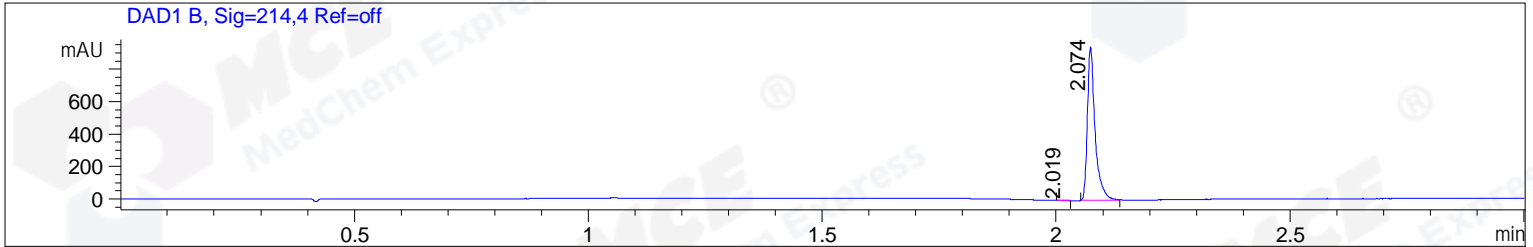


File ..1\DATA\2019\20190624\609\BIZ2019-621-WYQ2.D Tgt Mass (CHM):
 Injection Date : 24 Jun 19 10:01 am +0800 Seq. Line : 14
 Sample Name : BIZ2019-621-WYQ2 Location : PL-A-03
 Acq. Operator : ZJ_1432 Inj : 1
 Spec. Reported : MS Integration Inj Volume : 1 ul
 Acq. Method : D:\Chem32\1\data\2019\20190624\609\1-POS-3MIN.M
 Analysis Method : D:\CHEM32\1\DATA\2019\20190624\609\1-POS-3MIN.M
 Catalog No : HY-12702 Batch#42549
 Method Info : Mobile Phase: A: water(0.01%TFA) B:ACN(0.01%TFA)
 Gradient: 5% to 95%B within 1.3 min
 Flow Rate :1.8ml/min
 Column :SunFire C18, 4.6*50mm,3.5um A-RP-433
 Oven Temperature : 45



Integration Results for DAD1 B, Sig=214,4 Ref=off

RetTim	Width	Area	Height	Area%	MS (+)
2.02	0.02	1.65	1.57	0.15	ND
2.07	0.02	1087.47	944.80	99.85	250

Integration Results for DAD1 C, Sig=254,4 Ref=off

RetTim	Width	Area	Height	Area%	MS (+)
2.02	0.02	0.59	0.55	0.11	ND
2.07	0.02	542.52	470.61	99.89	250

Integration Results for MSD1 TIC, MS File

RetTim	Width	Area	Height	Area%	MS (+)
2.09	0.03	373027.56	176101.08	100.00	250

Ret. Time: 2.09

<<<< POSITIVE SPECTRA >>>>

ES-API Positive

