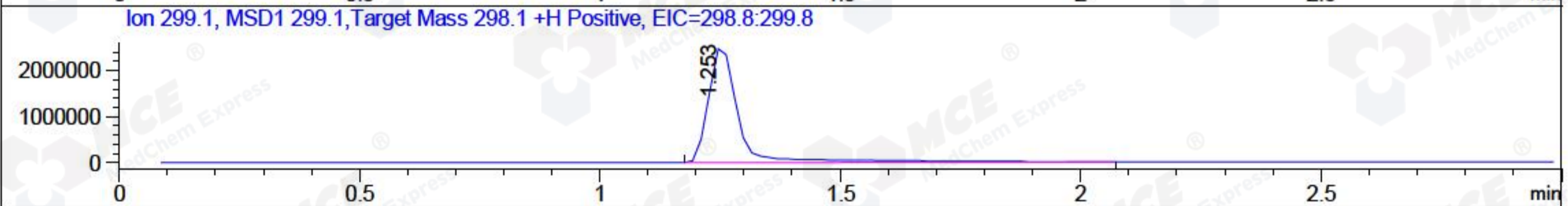
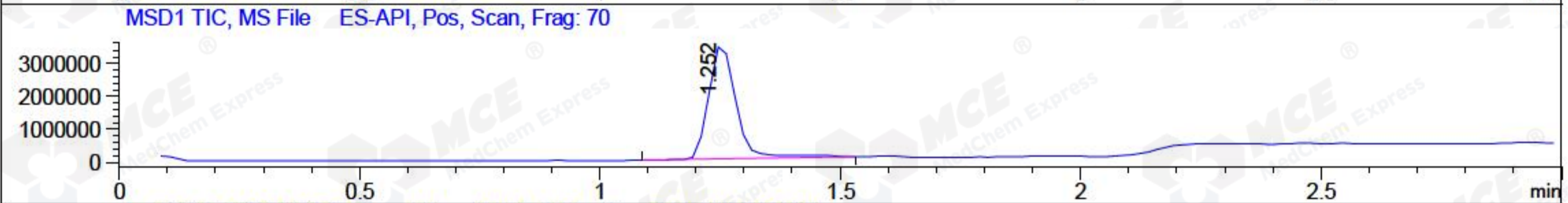
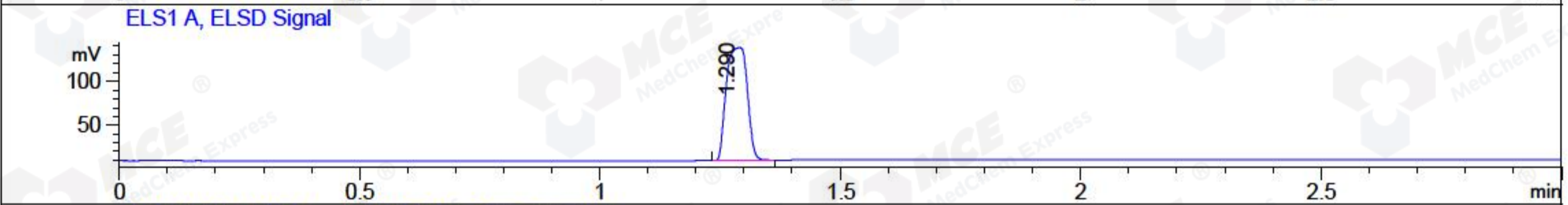
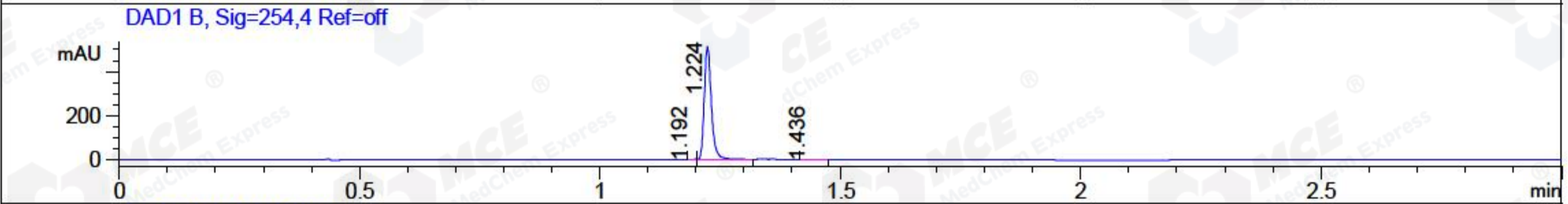
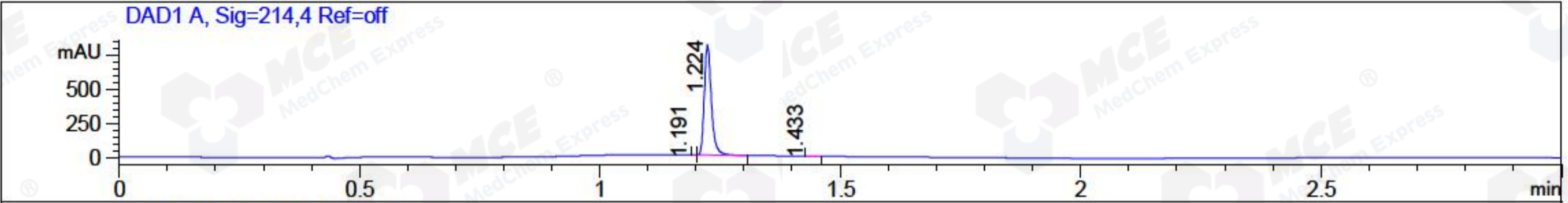


File ..\Data\20171106\20171106\BIZ2017-N06-WYQ10.D Tgt Mass (CHM):  
 Injection Date : 6 Nov 17 12:05 pm +0800 Seq. Line : 42  
 Sample Name : BIZ2017-N06-WYQ10 Location : P1-D-02  
 Acq. Operator : SYSTEM Inj : 1  
 Spec. Reported : MS Integration Inj Volume : 1 ul  
 Acq. Method : D:\LCMS03\Data\20171106\20171106\1-POS-3MIN.M  
 Analysis Method : D:\LCMS03\Data\20171106\20171106\1-POS-3MIN.M  
 Catalog No : HY-12707 Batch#27071  
 Method Info : Mobile Phase: A: water(0.01%TFA) B:ACN(0.01%TFA)  
 Gradient: 5% to 95%B within 1.3 min  
 Flow Rate :1.8ml/min  
 Column :SunFire C18, 4.6\*50mm,3.5um A-RP-186  
 Oven Temperature : 45C



Integration Results for DAD1 A, Sig=214,4 Ref=off

RetTim	Width	Area	Height	Area%	MS (+)
1.19	0.01	0.41	0.26	0.05	299
1.22	0.02	821.47	804.52	99.90	299
1.43	0.02	0.39	0.36	0.05	299

Integration Results for DAD1 B, Sig=254,4 Ref=off

RetTim	Width	Area	Height	Area%	MS (+)
1.19	0.01	0.32	0.59	0.06	299
1.22	0.02	525.23	513.05	99.78	299
1.44	0.02	0.82	0.70	0.16	299

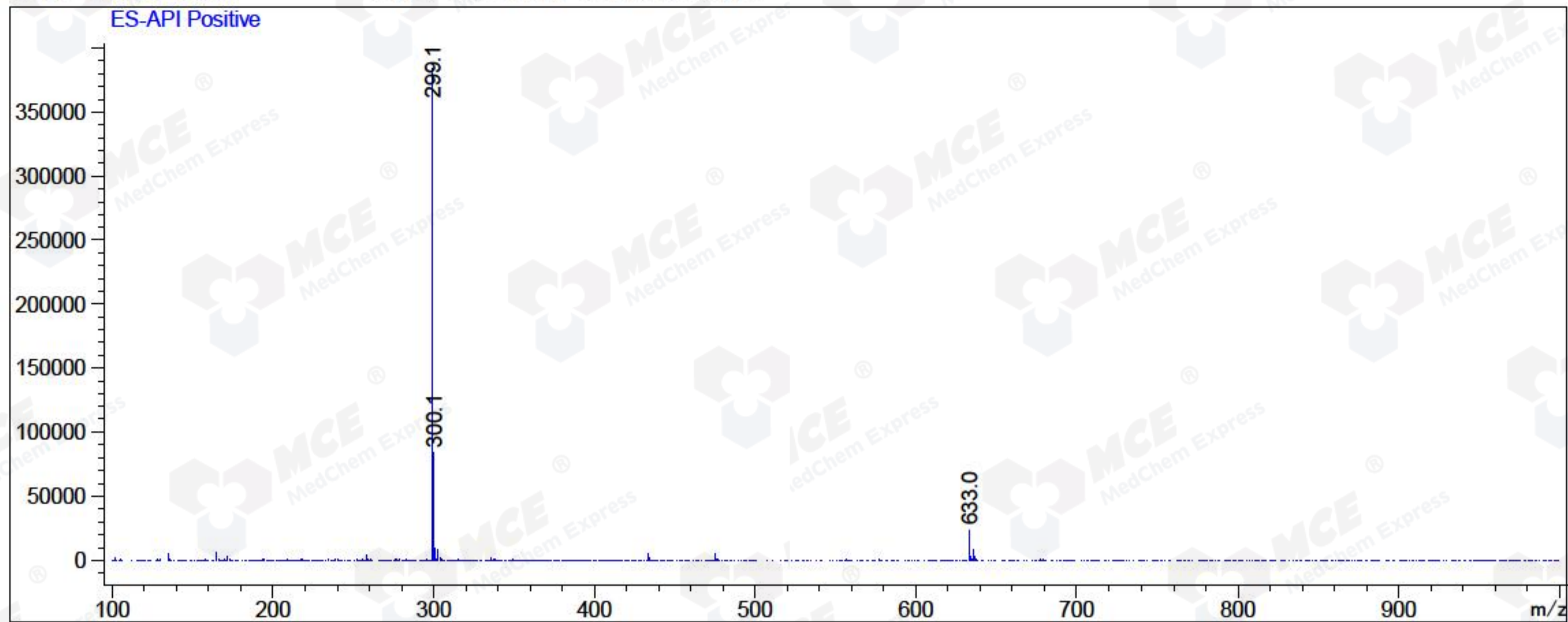
Integration Results for MSD1 TIC, MS File

RetTim	Width	Area	Height	Area%	MS (+)
1.25	0.06	13872039.00	3485806.75	100.00	299



Ret. Time: 1.25

<<<< POSITIVE SPECTRA >>>>



\*\*\* End of Report \*\*\*