

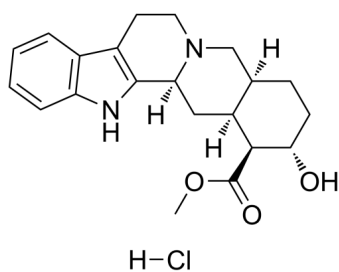
Rauwolscine (hydrochloride)

Cat. No.: HY-12710A
Batch No.: 247897
CAS No.: 6211-32-1
Molecular Formula: C₂₁H₂₇ClN₂O₃

ANALYTICAL DATA

Theoretical: C(64.52%), H(6.96%), N(7.17%)
Result: C(64.38%), H(7.00%), N(7.11%)

Chemical Structure:



Caution: Product has not been fully validated for medical applications. For research use only.

Tel: 609-228-6898

Fax: 609-228-5909

E-mail: tech@MedChemExpress.com

Address: 1 Deer Park Dr, Suite Q, Monmouth Junction, NJ 08852, USA