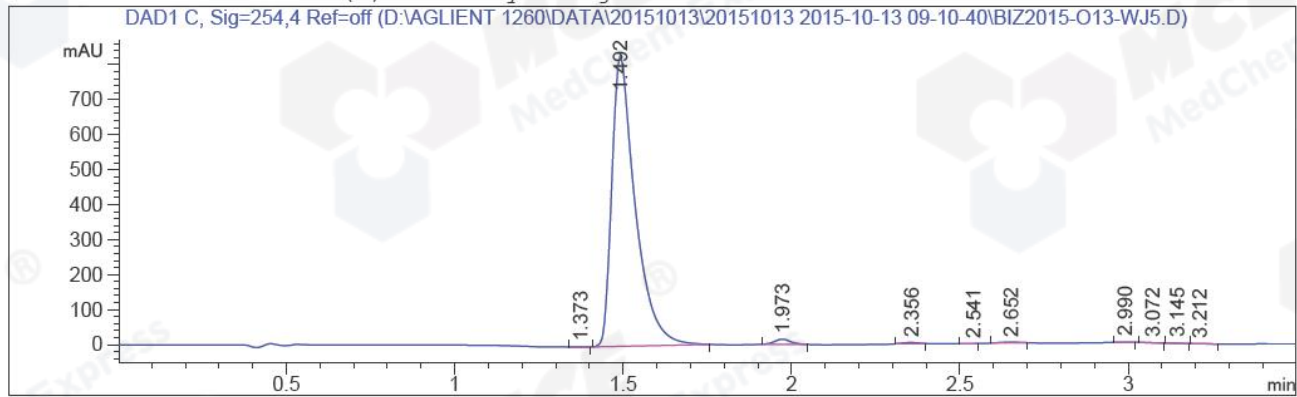


=====
Acq. Operator : Yang Qian(LCMS-02) Seq. Line : 56
Acq. Instrument : HY-LCMS-02 Location : P1-C-04
Injection Date : 10/13/2015 1:38:21 PM Inj : 1
Inj Volume : 3.000 µl
Acq. Method : D:\AGLIENT 1260\DATA\20151013\20151013 2015-10-13 09-10-40\100-1000MS+3MIN-
1.5_(0.02%FA).M
Last changed : 10/13/2015 9:10:40 AM by Yang Qian(LCMS-02)
Analysis Method : D:\AGLIENT 1260\DATA\20151012\20151012 2015-10-12 13-29-27\100-1000MS+3MIN-
1.5_(0.02%FA).M (Sequence Method)
Last changed : 10/14/2015 9:31:46 AM by Yang Qian(LCMS-02)
(modified after loading)
Method Info : Postive,MS:100-1000,Column ID:A-RP-132,40°C
Catalog No : HY-12726 Batch#18118
A-RP-134

Additional Info : Peak(s) manually integrated



=====
Area Percent Report
=====

Sorted By : Signal
Multiplier : 1.0000
Dilution : 1.0000
Do not use Multiplier & Dilution Factor with ISTDs

Signal 1: DAD1 C, Sig=254,4 Ref=off

Peak #	RetTime [min]	Type	Width [min]	Area [mAU*s]	Height [mAU]	Area %
1	1.373	MM	0.0461	9.81510e-1	3.54805e-1	0.0240
2	1.492	MM	0.0800	4006.16797	834.79089	98.1502
3	1.973	MM	0.0555	48.59188	14.58382	1.1905
4	2.356	MM	0.0525	9.49116	3.01357	0.2325
5	2.541	MM	0.0624	1.07136	2.86339e-1	0.0262
6	2.652	MM	0.0605	6.85313	1.88788	0.1679
7	2.990	MM	0.0364	3.09792	1.41951	0.0759
8	3.072	MM	0.0406	2.53786	1.04194	0.0622
9	3.145	MM	0.0421	1.71840	6.80035e-1	0.0421
10	3.212	MM	0.0396	1.15793	4.87390e-1	0.0284

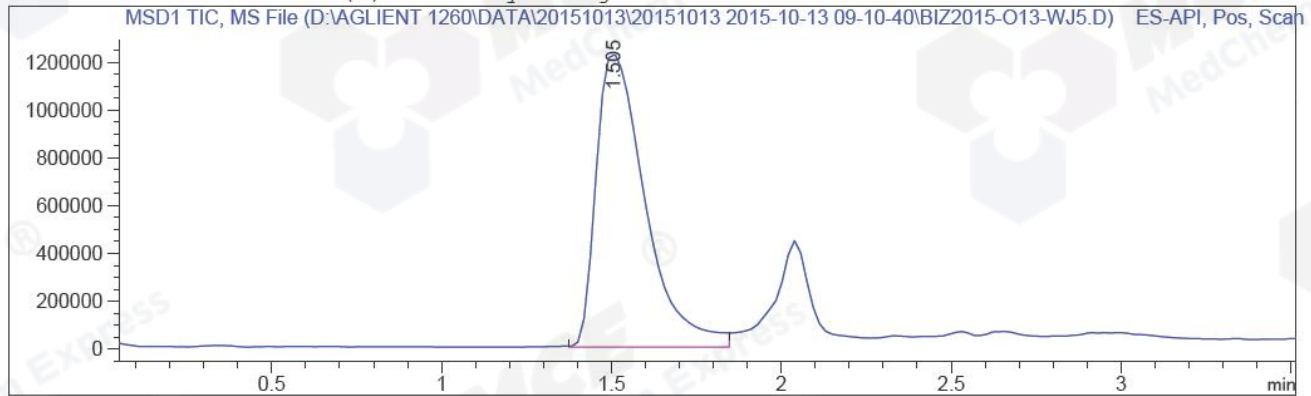
Totals : 4081.66912 858.54619

=====
*** End of Report ***

=====

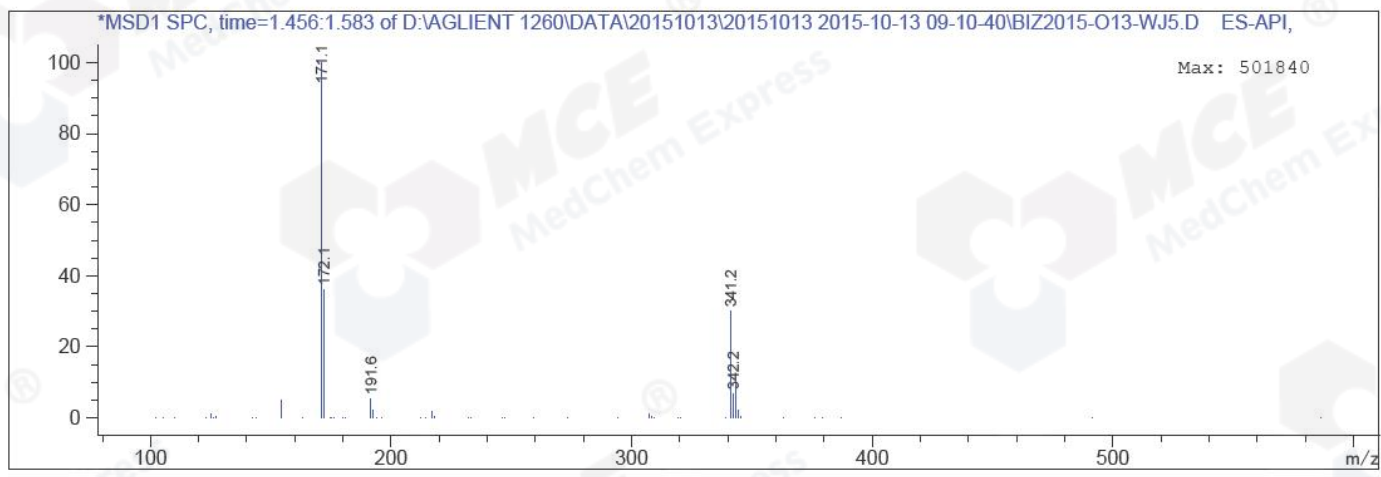
Acq. Operator	: Yang Qian(LCMS-02)	Seq. Line	: 56
Acq. Instrument	: HY-LCMS-02	Location	: P1-C-04
Injection Date	: 10/13/2015 1:38:21 PM	Inj	: 1
		Inj Volume	: 3.000 µl
Acq. Method	: D:\AGLIENT 1260\DATA\20151013\20151013 2015-10-13 09-10-40\100-1000MS+3MIN-1.5_(0.02%FA).M		
Last changed	: 10/13/2015 9:10:40 AM by Yang Qian(LCMS-02)		
Analysis Method	: D:\AGLIENT 1260\METHOD\10-80B,220NM,(RP-HPLC).M		
Last changed	: 10/13/2015 3:00:52 PM by Yang Qian(LCMS-02) (modified after loading)		
Method Info	: MS:100-1000,Column ID:A-RP-108,30°C		
Catalog No	: HY-12726 Batch#18118 A-RP-134		

Additional Info : Peak(s) manually integrated



MS Signal: MSD1 TIC, MS File, ES-API, Pos, Scan, Frag: 50
Spectra averaged over upper half of peaks.
Noise Cutoff: 1000 counts.
Reportable Ion Abundance: > 10%.

Retention Time (MS)	MS Area	Mol. Weight or Ion
1.505	12281293	343.20 I
		341.20 I
		172.10 I
		171.10 I



*** End of Report ***