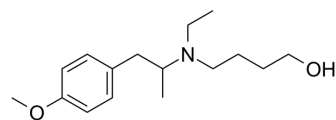


## Mebeverine alcohol

<b>Cat. No.:</b>	HY-12770		
<b>CAS No.:</b>	14367-47-6		
<b>Molecular Formula:</b>	C <sub>16</sub> H <sub>27</sub> NO <sub>2</sub>		
<b>Molecular Weight:</b>	265.39		
<b>Target:</b>	Drug Metabolite		
<b>Pathway:</b>	Metabolic Enzyme/Protease		
<b>Storage:</b>	Pure form	-20°C	3 years
		4°C	2 years
	In solvent	-80°C	6 months
		-20°C	1 month



### SOLVENT & SOLUBILITY

#### In Vitro

DMSO : 100 mg/mL (376.80 mM; Need ultrasonic)

Preparing Stock Solutions	Solvent Concentration	Mass		
		1 mg	5 mg	10 mg
	1 mM	3.7680 mL	18.8402 mL	37.6804 mL
	5 mM	0.7536 mL	3.7680 mL	7.5361 mL
	10 mM	0.3768 mL	1.8840 mL	3.7680 mL

Please refer to the solubility information to select the appropriate solvent.

#### In Vivo

- Add each solvent one by one: 10% DMSO >> 40% PEG300 >> 5% Tween-80 >> 45% saline  
Solubility: ≥ 2.5 mg/mL (9.42 mM); Clear solution
- Add each solvent one by one: 10% DMSO >> 90% (20% SBE-β-CD in saline)  
Solubility: ≥ 2.5 mg/mL (9.42 mM); Clear solution
- Add each solvent one by one: 10% DMSO >> 90% corn oil  
Solubility: ≥ 2.5 mg/mL (9.42 mM); Clear solution

### BIOLOGICAL ACTIVITY

#### Description

Mebeverine alcohol is a metabolite of Mebeverine, which is a musculotropic antispasmodic drug.

**Caution: Product has not been fully validated for medical applications. For research use only.**

Tel: 609-228-6898

Fax: 609-228-5909

E-mail: tech@MedChemExpress.com

Address: 1 Deer Park Dr, Suite Q, Monmouth Junction, NJ 08852, USA