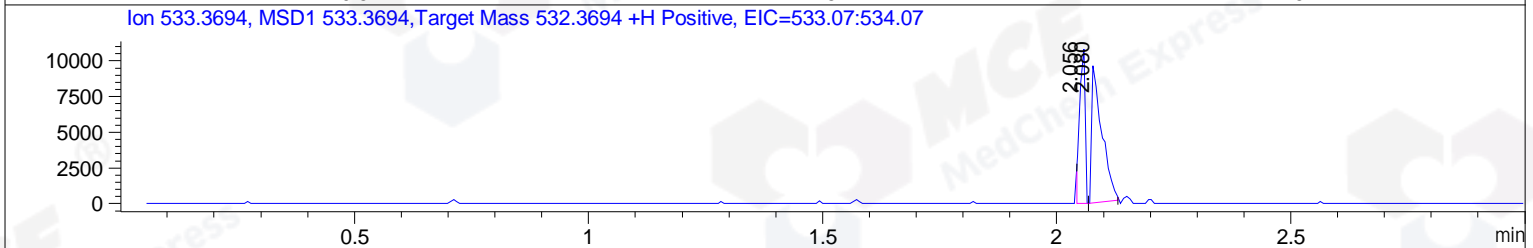
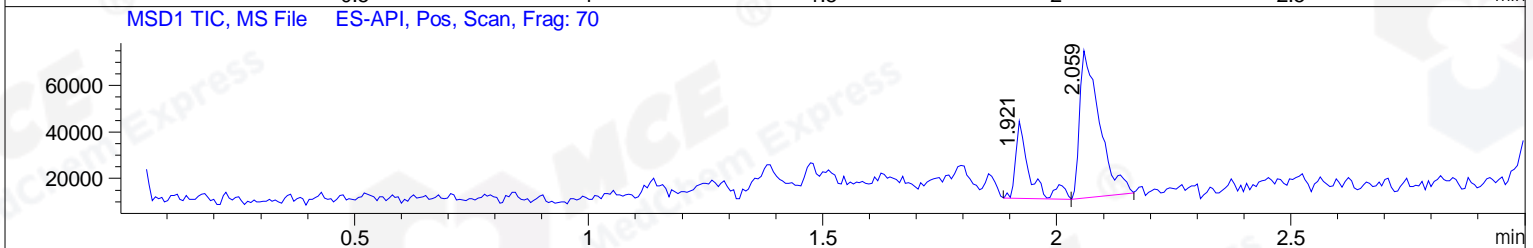
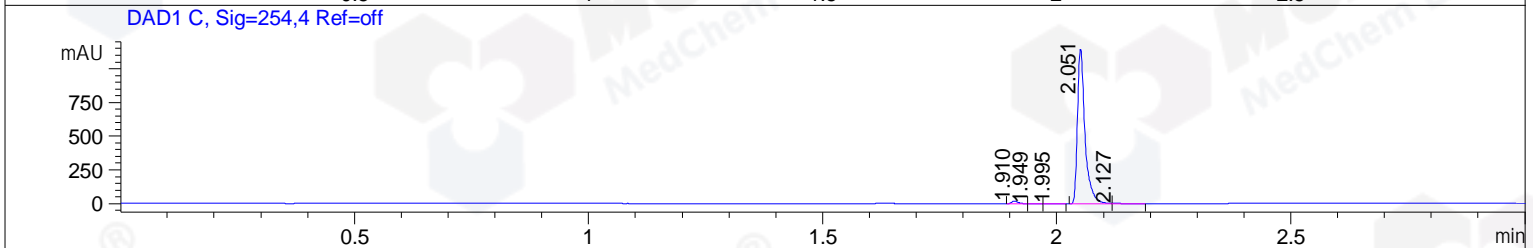
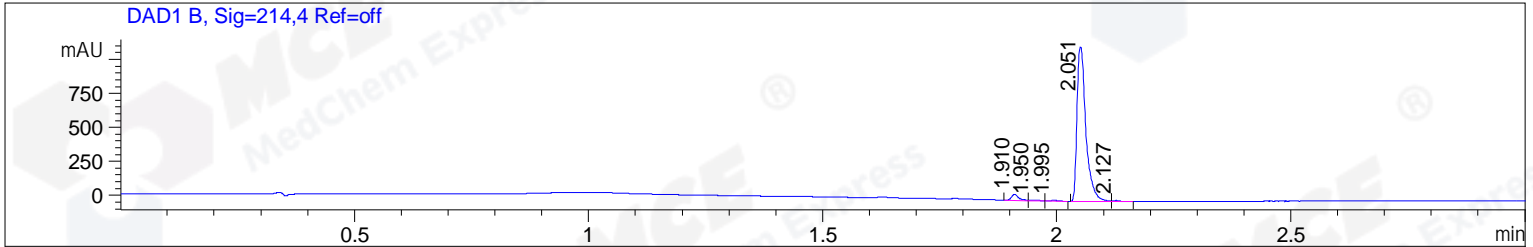


File ..\DATA\2019\20190716\630\CPK2019-715-18853.D Tgt Mass (CHM):  
 Injection Date : 16 Jul 19 11:01 am +0800 Seq. Line : 26  
 Sample Name : CPK2019-715-18853 Location : PL-D-02  
 Acq. Operator : ZJ\_1432 Inj : 1  
 Spec. Reported : MS Integration Inj Volume : 1 ul  
 Acq. Method : D:\Chem32\1\data\2019\20190716\630\1-POS-3MIN.M  
 Analysis Method : D:\CHEM32\1\DATA\2019\20190716\630\1-POS-3MIN.M  
 Catalog No : HY-12776 Batch# 18853  
 Method Info : Mobile Phase: A: water(0.01%TFA) B:ACN(0.01%TFA)  
 Gradient: 5% to 95%B within 1.3 min  
 Flow Rate :1.8ml/min  
 Column :SunFire C18, 4.6\*50mm,3.5um A-RP-433  
 Oven Temperature : 45



Integration Results for DAD1 B, Sig=214,4 Ref=off

RetTim	Width	Area	Height	Area%	MS (+)
1.91	0.02	49.95	45.68	3.16	372
1.95	0.02	9.37	6.37	0.59	ND
1.99	0.03	9.75	6.50	0.62	ND
2.05	0.02	1501.49	1138.72	95.05	532
2.13	0.02	9.12	8.34	0.58	658

Integration Results for DAD1 C, Sig=254,4 Ref=off

RetTim	Width	Area	Height	Area%	MS (+)
1.91	0.02	22.34	21.68	1.68	372
1.95	0.02	3.12	2.64	0.23	ND
2.00	0.02	4.52	3.42	0.34	ND
2.05	0.02	1294.74	1150.82	97.14	532
2.13	0.02	8.08	6.54	0.61	ND

Integration Results for MSD1 TIC, MS File

RetTim	Width	Area	Height	Area%	MS (+)
--------	-------	------	--------	-------	--------

1.92	0.03	68453.37	33534.72	26.85	ND
2.06	0.04	186510.59	63793.70	73.15	532

Ret. Time: 2.06

ES-API Positive

