

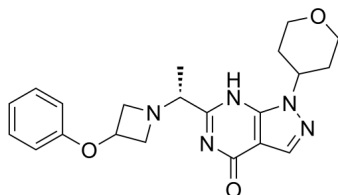
PF-04449613

Cat. No.: HY-12788
Batch No.: 273462
CAS No.: 1236858-52-8
Molecular Formula: C₂₁H₂₅N₅O₃

ANALYTICAL DATA

Theoretical: C(63.78%), H(6.37%), N(17.7%)
Result: C(63.61%), H(6.45%), N(17.31%)

Chemical Structure:



Caution: Product has not been fully validated for medical applications. For research use only.

Tel: 609-228-6898

Fax: 609-228-5909

E-mail: tech@MedChemExpress.com

Address: 1 Deer Park Dr, Suite Q, Monmouth Junction, NJ 08852, USA