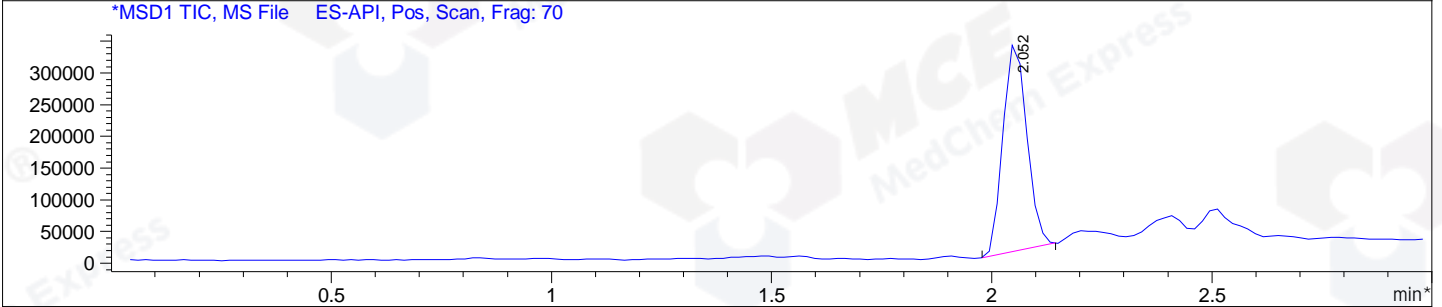
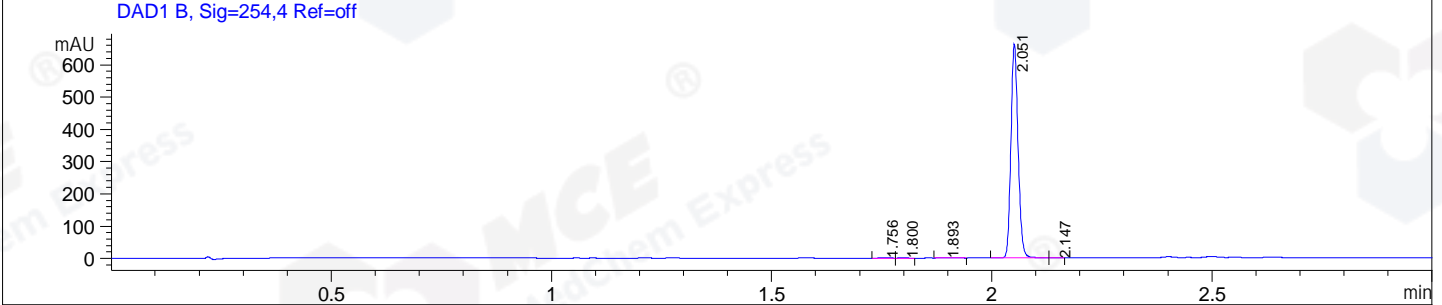
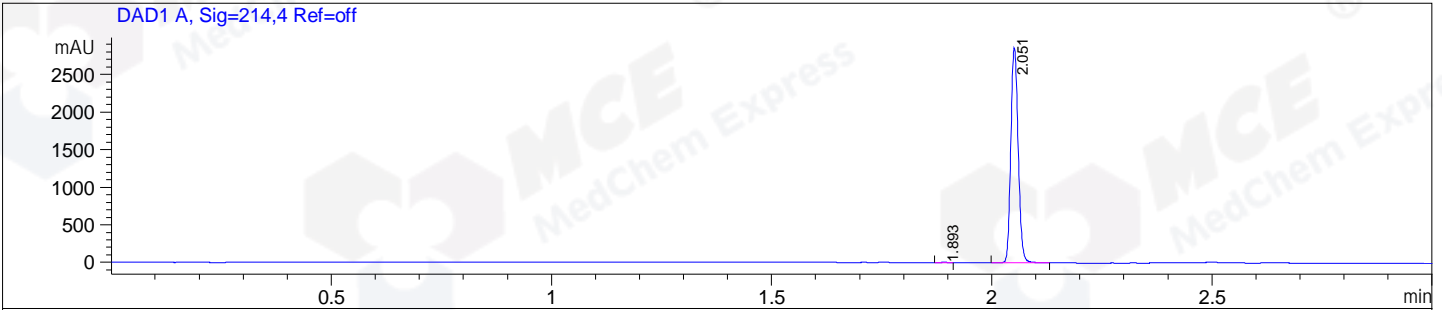


File E:\ChemStation\1\DATA\2024\2024-09\2024-09-26\CPK2024-926-23518-UPLC-MS-10-045861.D  
 Injection Date : 26-Sep-24, 20:18:37 Tgt Mass(EZX) :  
 Sample Name : CPK2024-926-23518 Location : P1-A-02  
 Acq. Operator : LY\_2278 Inj : 1  
 Spec. Reported : MS Integration Inj Volume : 0.8 ul  
 Acq. Method : E:\ChemStation\1\Methods\1-POS-UPLC3.0MIN(1.2)(150-1000).M  
 Analysis Method : E:\CHEMSTATION\1\METHODS\1-POS-UPLC3.0MIN(1.2)(150-1000).M  
 CAS NO. : 1206123-37-6 WalkUp method: '1-POS-3MIN' Project: CPK2024  
 Method Info : Mobile Phase: A: water(0.01%TFA) B:ACN(0.01%TFA)  
 Gradient: 5% to 95%B within 2.0 min  
 Flow Rate :1.2ml/min  
 Column :Shim-pack Scepter C18-120, 3.0\*33mm,3um  
 Oven Temperature : 45C



Integration Results for DAD1 A, Sig=214,4 Ref=off

RetTim	Width	Area	Height	Area%
1.89	0.02	2.90	2.75	0.09
2.05	0.02	3334.66	2855.32	99.91

Integration Results for DAD1 B, Sig=254,4 Ref=off

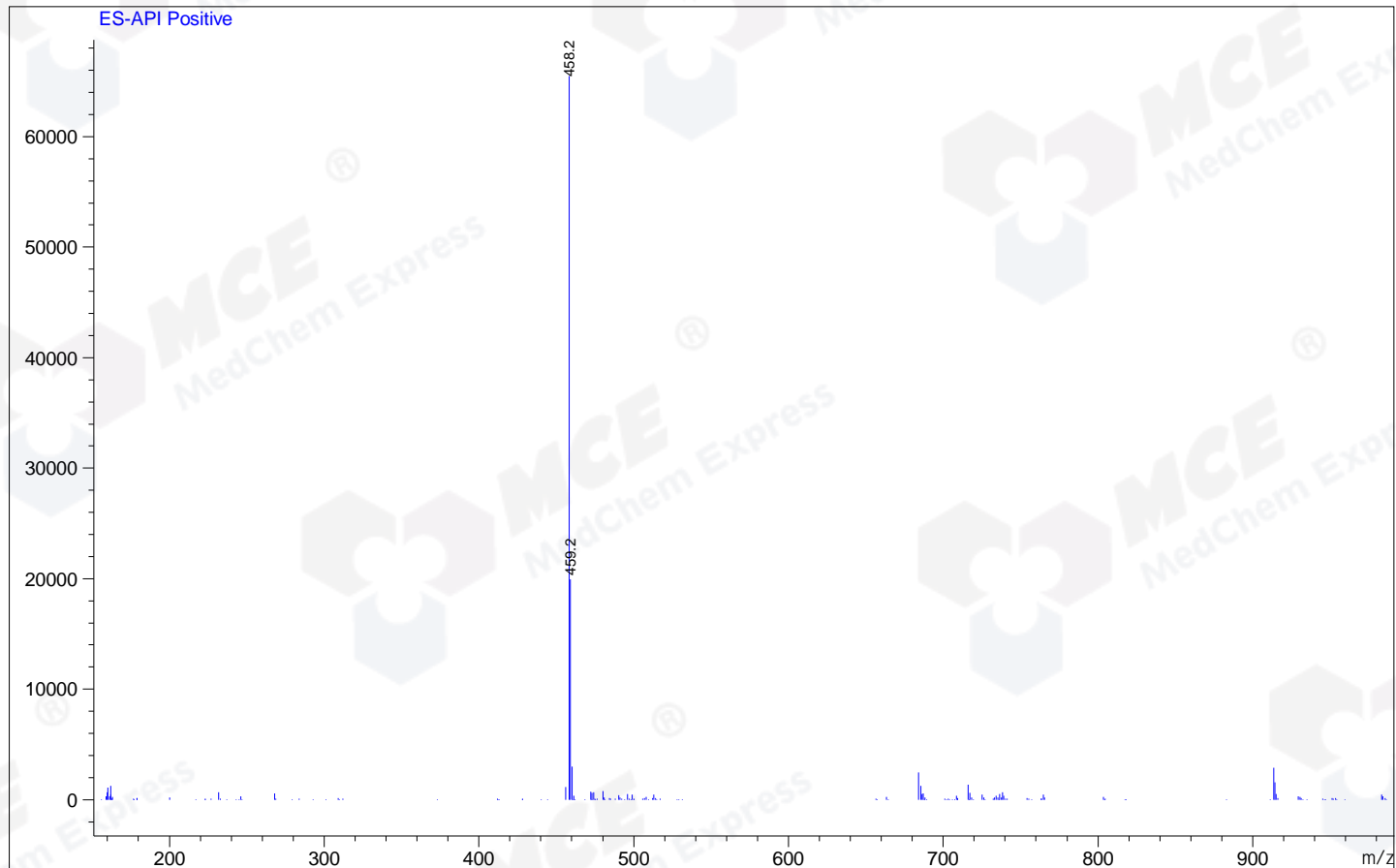
RetTim	Width	Area	Height	Area%
1.76	0.02	1.46	1.29	0.19
1.80	0.02	0.50	0.47	0.07
1.89	0.02	1.07	0.88	0.14
2.05	0.02	748.92	661.45	99.54
2.15	0.02	0.40	0.42	0.05

Integration Results for MSD1 TIC, MS File

RetTim	Width	Area	Height	Area%
2.05	0.06	1230002.75	330473.00	100.00

Ret. Time: 2.05

<<<< POSITIVE SPECTRA >>>>



\*\*\* End of Report \*\*\*