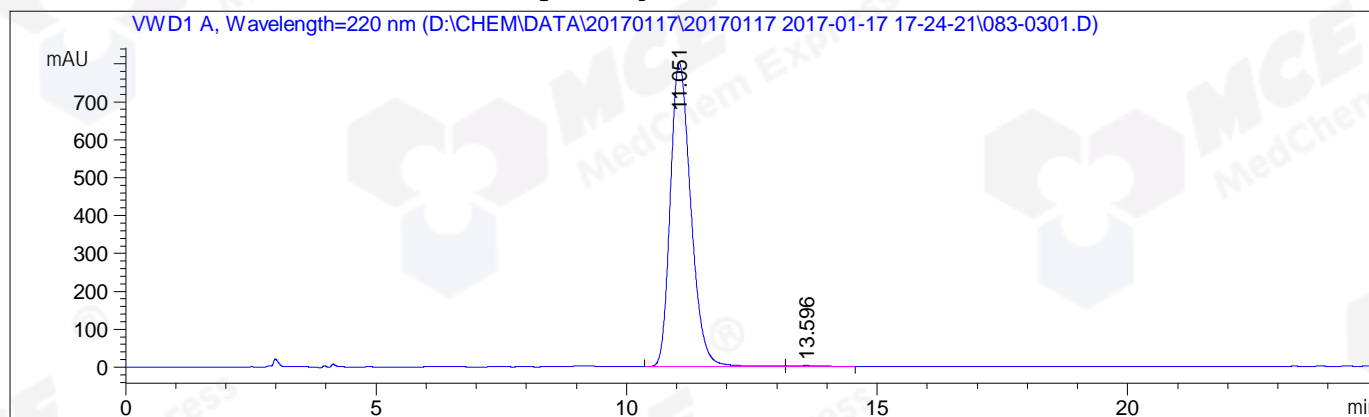


Sample Name: BIZ2017-117-WJ7

=====  
Acq. Operator : CWQ\_497 Seq. Line : 3  
Acq. Instrument : HPLC-04 Location : Vial 83  
Injection Date : 1/17/2017 6:47:28 PM Inj : 1  
 Inj Volume : 5.0 µl  
Acq. Method : D:\CHEM\DATA\20170117\20170117 2017-01-17 17-24-21\HY-12789-20170117,220NM,  
C2.M  
Last changed : 1/17/2017 5:23:24 PM by CWQ\_497  
Analysis Method: D:\CHEM\METHODS\HY-12789-20170117,220NM,C2.M  
Last changed : 1/18/2017 8:37:39 AM by CWQ\_497  
 (modified after loading)  
Catalog No : HY-12789 Batch#23301  
 C-NP-25  
=====

Additional Info : Peak(s) manually integrated



=====  
Area Percent Report  
=====

Sorted By : Signal  
Multiplier: : 1.0000  
Dilution: : 1.0000  
Use Multiplier & Dilution Factor with ISTDs

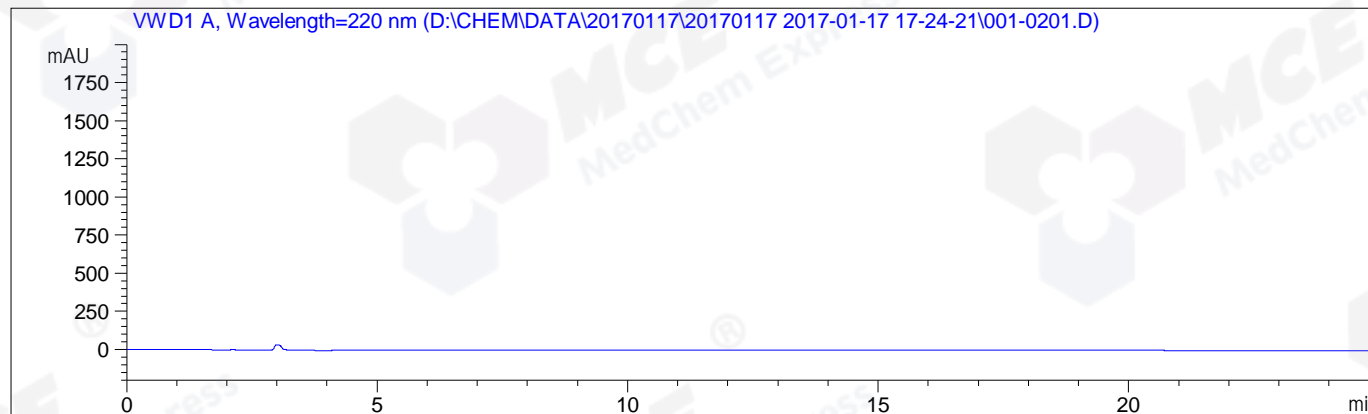
Signal 1: VWD1 A, Wavelength=220 nm

Peak #	RetTime [min]	Type	Width [min]	Area mAU*s	Height [mAU]	Area %
1	11.051	BV	0.4423	2.29020e4	802.22424	99.5402
2	13.596	VB	0.5016	105.79017	2.58855	0.4598
Totals :				2.30078e4	804.81280	

=====  
\*\*\* End of Report \*\*\*

=====  
Acq. Operator : CWQ\_497                      Seq. Line : 2  
Acq. Instrument : HPLC-04                      Location : Vial 1  
Injection Date : 1/17/2017 6:05:53 PM          Inj : 1  
   Inj Volume : 5.0 µl  
Acq. Method : D:\CHEM\DATA\20170117\20170117 2017-01-17 17-24-21\HY-12789-20170117,220NM,  
   C2.M  
Last changed : 1/17/2017 5:23:24 PM by CWQ\_497  
Analysis Method : D:\CHEM\METHODS\HY-12789-20170117,220NM,C2.M  
Last changed : 1/18/2017 8:37:07 AM by CWQ\_497  
   (modified after loading)  
Catalog No : HY-12789 Batch#23301  
   C-NP-25  
=====

Additional Info : Peak(s) manually integrated



=====  
Area Percent Report  
=====

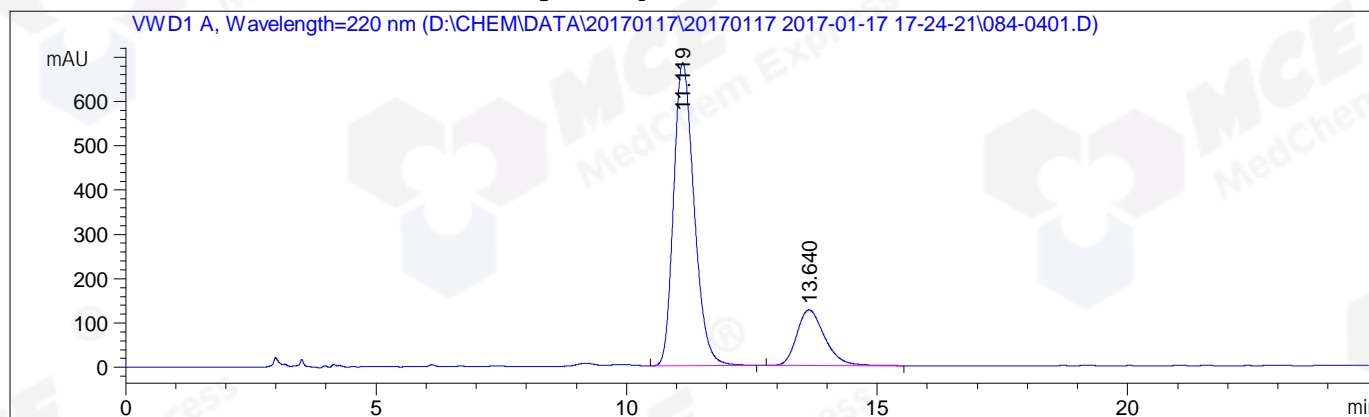
Sorted By : Signal  
Multiplier: : 1.0000  
Dilution: : 1.0000  
Use Multiplier & Dilution Factor with ISTDs

No peaks found

=====  
\*\*\* End of Report \*\*\*

=====  
Acq. Operator : CWQ\_497 Seq. Line : 4  
Acq. Instrument : HPLC-04 Location : Vial 84  
Injection Date : 1/17/2017 7:29:01 PM Inj : 1  
Inj Volume : 5.0 µl  
Acq. Method : D:\CHEM\DATA\20170117\20170117 2017-01-17 17-24-21\HY-12789-20170117,220NM,  
C2.M  
Last changed : 1/17/2017 5:23:24 PM by CWQ\_497  
Analysis Method : D:\CHEM\METHODS\HY-12789-20170117,220NM,C2.M  
Last changed : 1/18/2017 8:37:39 AM by CWQ\_497  
(modified after loading)  
Catalog No : HY-12789 Batch#23301  
C-NP-25

Additional Info : Peak(s) manually integrated



=====  
Area Percent Report  
=====

Sorted By : Signal  
Multiplier: : 1.0000  
Dilution: : 1.0000  
Use Multiplier & Dilution Factor with ISTDs

Signal 1: VWD1 A, Wavelength=220 nm

Peak #	RetTime [min]	Type	Width [min]	Area mAU*s	Height [mAU]	Area %
1	11.119	VB	0.4407	1.94334e4	683.96857	80.1028
2	13.640	BB	0.5886	4827.18164	125.48390	19.8972
Totals :				2.42606e4	809.45247	

=====  
\*\*\* End of Report \*\*\*