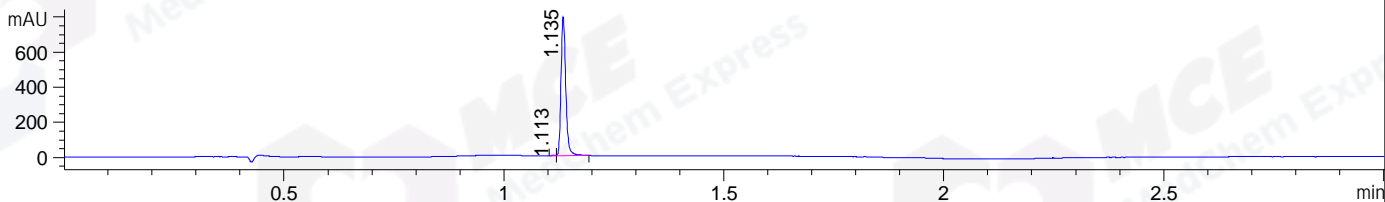
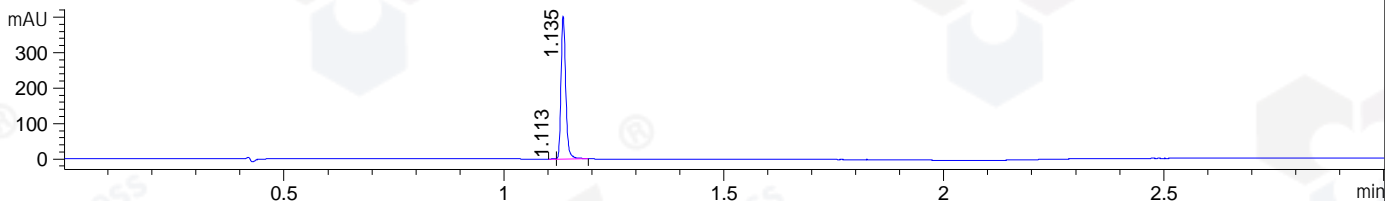


File ..DATA\2019\20190830\713\CPK2019-830-24001_.D Tgt Mass (CHM):
Injection Date : 30 Aug 19 4:54 pm +0800 Seq. Line : 27
Sample Name : CPK2019-830-24001 Location : P1-C-06
Acq. Operator : ZJ_1432 Inj : 1
Spec. Reported : MS Integration Inj Volume : 2 ul
Acq. Method : D:\Chem32\1\data\2019\20190830\713\1-POS-3MIN.M
Analysis Method : D:\CHEM32\1\DATA\2019\20190830\713\1-POS-3MIN.M
Catalog No : HY-12794 Batch#24001
Method Info : Mobile Phase: A: water(0.01%TFA) B:ACN(0.01%TFA)
Gradient: 5% to 95%B within 1.3 min
Flow Rate :1.8ml/min
Column :SunFire C18, 4.6*50mm,3.5um A-RP-433
Oven Temperature : 45□

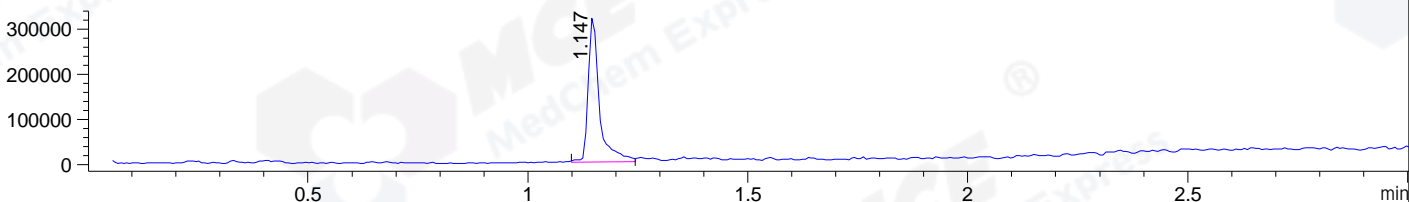
DAD1 B, Sig=214,4 Ref=off



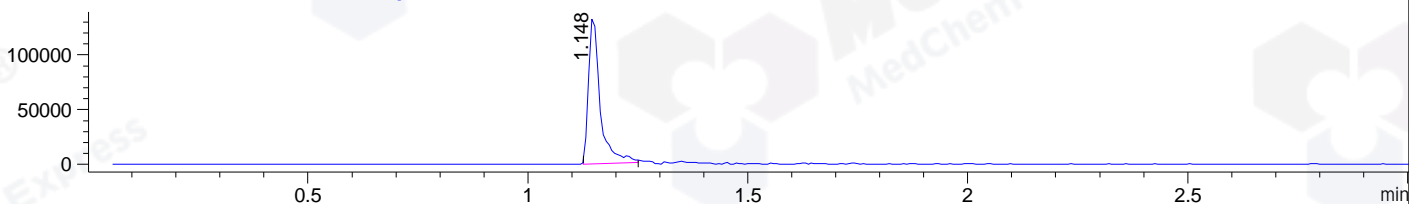
DAD1 C, Sig=254,4 Ref=off



MSD1 TIC, MS File ES-API, Pos, Scan, Frag: 70



Ion 320.3719, MSD1 320.3719, Target Mass 319.3719 +H Positive, EIC=320.07:321.07



Integration Results for DAD1 B, Sig=214,4 Ref=off

RetTim	Width	Area	Height	Area%	MS (+)
1.11	0.01	1.57	3.17	0.27	199
1.13	0.01	586.38	792.85	99.73	320

Integration Results for DAD1 C, Sig=254,4 Ref=off

RetTim	Width	Area	Height	Area%	MS (+)
1.11	0.01	1.14	1.93	0.38	199
1.13	0.01	298.62	403.64	99.62	320

Integration Results for MSD1 TIC, MS File

RetTim	Width	Area	Height	Area%	MS (+)
1.15	0.03	558381.31	323237.78	100.00	320

Ret. Time: 1.15

<<<< POSITIVE SPECTRA >>>>

