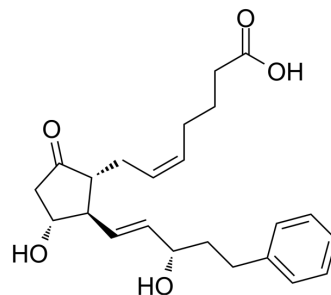


## 17-Phenyl- $\omega$ -trilor-PGE2

Cat. No.:	HY-128039
CAS No.:	38315-43-4
Molecular Formula:	C <sub>23</sub> H <sub>30</sub> O <sub>5</sub>
Molecular Weight:	386.48
Target:	Prostaglandin Receptor
Pathway:	GPCR/G Protein
Storage:	Please store the product under the recommended conditions in the Certificate of Analysis.



### BIOLOGICAL ACTIVITY

Description	17-Phenyl- $\omega$ -trilor-PGE2 is a PGE2 (HY-101952) analog, which is an agonist for EP1 and EP3 receptor. 17-Phenyl- $\omega$ -trilor-PGE2 inhibits the PAF-induced aggregation of human platelet-rich plasma (PRP) and Cicaprost (HY-19583) induced Cyclic AMP (HY-B1511) production <sup>[1]</sup> .	
IC <sub>50</sub> & Target	EP1	EP3

### REFERENCES

[1]. Matthews JS, et al., Potentiation of aggregation and inhibition of adenylate cyclase in human platelets by prostaglandin E analogues. Br J Pharmacol. 1993 Feb;108(2):363-9.

**Caution: Product has not been fully validated for medical applications. For research use only.**

Tel: 609-228-6898

Fax: 609-228-5909

E-mail: tech@MedChemExpress.com

Address: 1 Deer Park Dr, Suite Q, Monmouth Junction, NJ 08852, USA