

## NCRW0005-F05

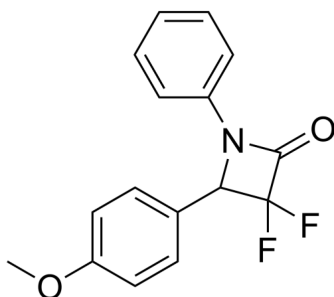
---

Cat. No.: HY-128057  
Batch No.: 228261  
CAS No.: 342779-66-2  
Molecular Formula: C<sub>16</sub>H<sub>13</sub>F<sub>2</sub>NO<sub>2</sub>

### ANALYTICAL DATA

Theoretical: C(66.43%), H(4.53%), N(4.84%)  
Result: C(66.33%), H(4.44%), N(4.94%)

Chemical Structure:



**Caution: Product has not been fully validated for medical applications. For research use only.**

Tel: 609-228-6898

Fax: 609-228-5909

E-mail: [tech@MedChemExpress.com](mailto:tech@MedChemExpress.com)

Address: 1 Deer Park Dr, Suite Q, Monmouth Junction, NJ 08852, USA