

File ..1\DATA\2019\20190328\559\BIZ2019-327-CXL1.D Tgt Mass (CHM):

Injection Date : 28 Mar 19 10:32 am +0800 Seq. Line : 15

Sample Name : BIZ2019-327-CXL1 Location : P2-E-02

Acq. Operator : LQ_1052 Inj : 1

Spec. Reported : MS Integration Inj Volume : 1 ul

Acq. Method : D:\Chem32\1\data\2019\20190328\559\1-POS-3MIN-1.M

Analysis Method : D:\CHEM32\1\DATA\2019\20190328\559\1-POS-3MIN-1.M

Catalog No : HY-12815 Batch#42789

Method Info : Mobile Phase: A: water(0.01%TFA) B:ACN(0.01%TFA)

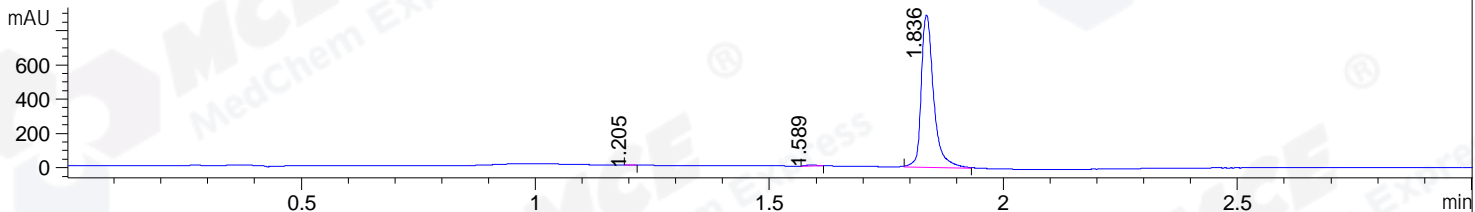
Gradient: 5% to 95%B within 1.3 min

Flow Rate :1.8ml/min

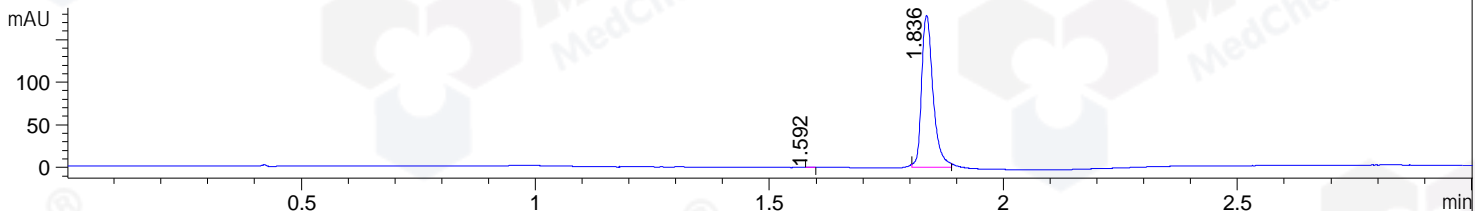
Column :SunFire C18, 4.6*50mm,3.5um A-RP-314

Oven Temperature : 45

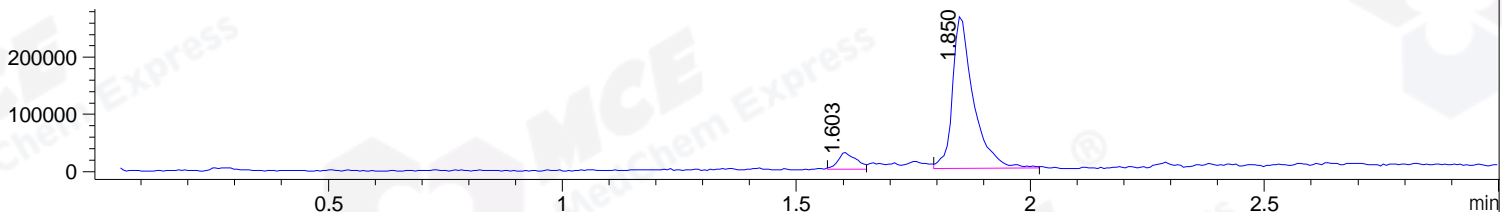
DAD1 B, Sig=214,4 Ref=off



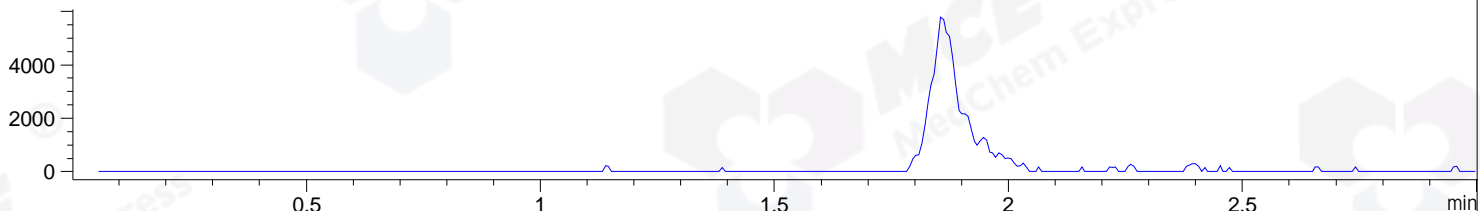
DAD1 C, Sig=254,4 Ref=off



MSD1 TIC, MS File ES-API, Pos, Scan, Frag: 70



Ion 427.1, MSD1 427.1, Target Mass 426.1 +H Positive, EIC=426.8:427.8



Integration Results for DAD1 B, Sig=214,4 Ref=off

| RetTim | Width | Area | Height | Area% | MS (+) |
|--------|-------|---------|--------|-------|--------|
| 1.20 | 0.02 | 0.96 | 1.04 | 0.06 | ND |
| 1.59 | 0.02 | 8.44 | 5.81 | 0.51 | 174 |
| 1.84 | 0.03 | 1637.46 | 889.51 | 99.43 | 387 |

Integration Results for DAD1 C, Sig=254,4 Ref=off

| RetTim | Width | Area | Height | Area% | MS (+) |
|--------|-------|--------|--------|-------|--------|
| 1.59 | 0.02 | 0.26 | 0.23 | 0.09 | 174 |
| 1.84 | 0.03 | 303.28 | 178.40 | 99.91 | 387 |

Integration Results for MSD1 TIC, MS File

| RetTim | Width | Area | Height | Area% | MS (+) |
|--------|-------|-----------|-----------|-------|--------|
| 1.60 | 0.03 | 79010.82 | 29767.30 | 8.67 | 174 |
| 1.85 | 0.04 | 832430.44 | 268589.06 | 91.33 | 387 |

Ret. Time: 1.60

<<<< POSITIVE SPECTRA >>>>

ES-API Positive



Ret. Time: 1.85

ES-API Positive

