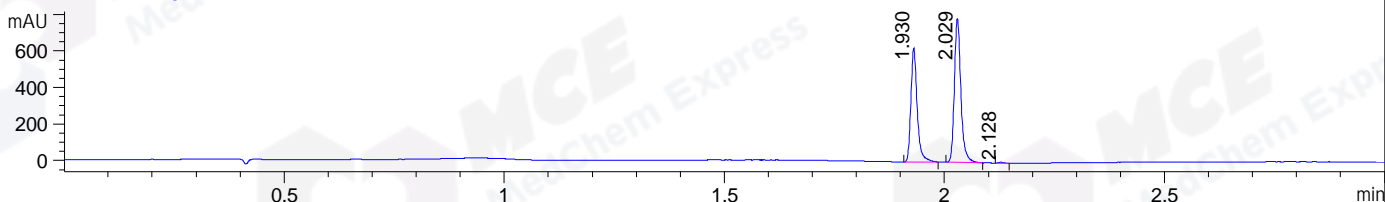
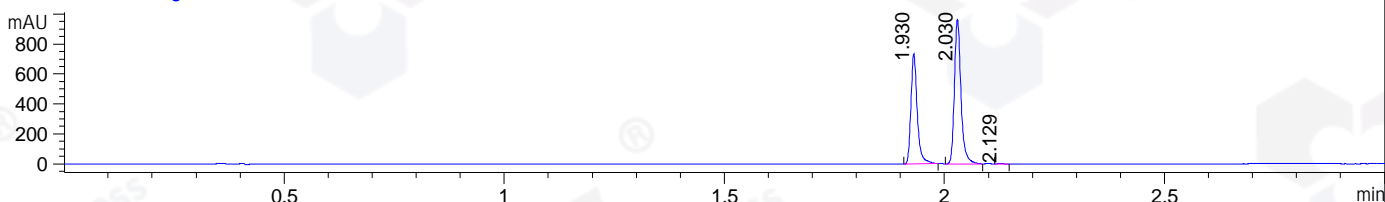


File ..DATA\2020\20201105\1145\BIZ2020-N04-WMX10.D Tgt Mass (CHM):
Injection Date : 5 Nov 20 3:22 pm +0800 Seq. Line : 55
Sample Name : BIZ2020-N04-WMX10 Location : P1-A-04
Acq. Operator : zyj_1547 Inj : 1
Spec. Reported : MS Integration Inj Volume : 1 ul
Acq. Method : D:\Chem32\1\data\2020\20201105\1145\1-POS-3MIN.M
Analysis Method : D:\CHEM32\1\DATA\2020\20201105\1145\1-POS-3MIN.M
Catalog No : HY-12828
Method Info : Mobile Phase: A: water(0.01%TFA) B:ACN(0.01%TFA)
Gradient: 5% to 95%B within 1.3 min
Flow Rate :1.8ml/min
Column :SunFire C18, 4.6*50mm,3.5um A-RP-698

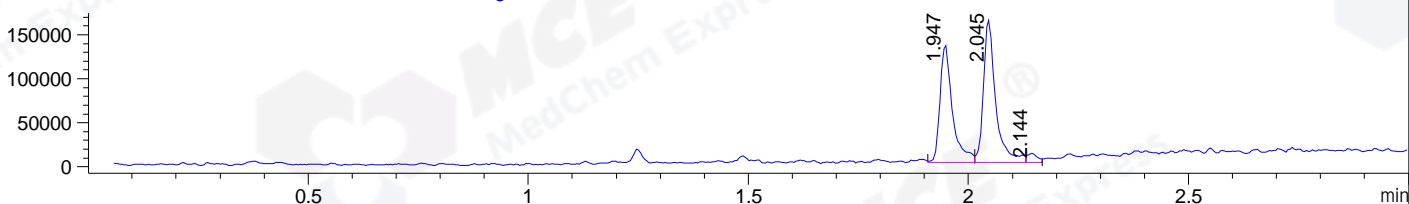
DAD1 B, Sig=214,4 Ref=off



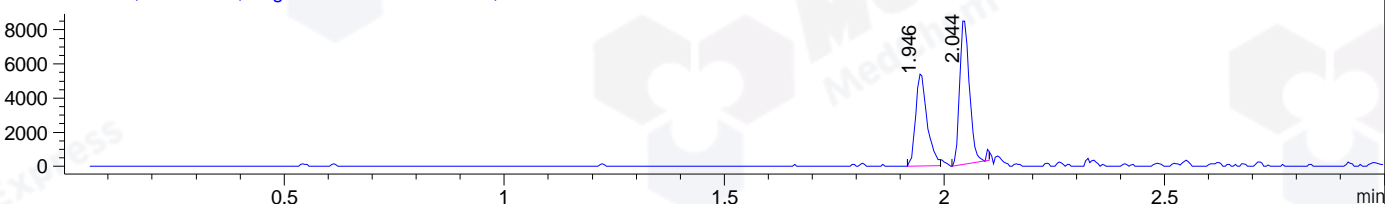
DAD1 C, Sig=254,4 Ref=off



MSD1 TIC, MS File ES-API, Pos, Scan, Frag: 70



Ion 339, MSD1 339, Target Mass 338 +H Positive, EIC=338.7:339.7



Integration Results for DAD1 B, Sig=214,4 Ref=off

RetTim	Width	Area	Height	Area%	MS (+)
1.93	0.02	619.66	622.29	43.14	338
2.03	0.02	811.85	789.13	56.52	338
2.13	0.02	4.82	5.31	0.34	ND

Integration Results for DAD1 C, Sig=254,4 Ref=off

RetTim	Width	Area	Height	Area%	MS (+)
1.93	0.02	731.81	735.59	42.15	338
2.03	0.02	999.10	966.74	57.54	338
2.13	0.02	5.34	5.76	0.31	ND

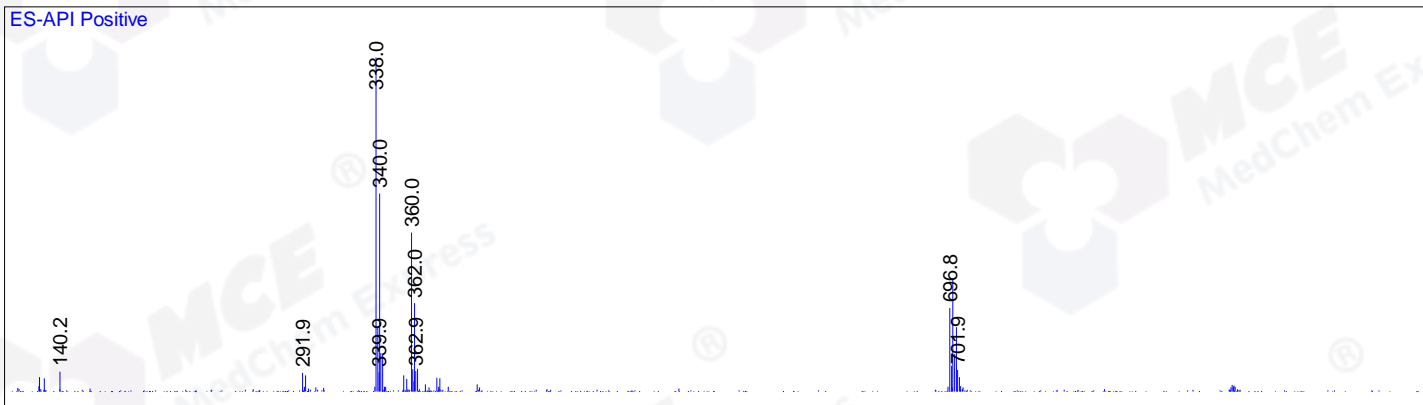
Integration Results for MSD1 TIC, MS File

RetTim	Width	Area	Height	Area%	MS (+)
1.95	0.03	262105.78	133717.11	44.33	338
2.05	0.03	312945.41	162140.77	52.93	338
2.14	0.02	16143.49	9810.53	2.73	ND

Ret. Time: 1.95

<<<< POSITIVE SPECTRA >>>>

ES-API Positive



Ret. Time: 2.05

ES-API Positive

