

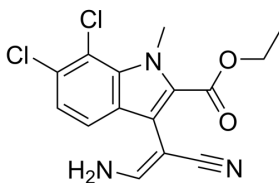
## KH-CB20

Cat. No.: HY-12828A  
CAS No.: 1354448-60-4  
Batch No.: 158229  
Chemical Name: 1H-Indole-2-carboxylic acid, 3-(2-amino-1-cyanoethyl)-6,7-dichloro-1-methyl-, ethyl ester

### PHYSICAL AND CHEMICAL PROPERTIES

Molecular Formula: C<sub>15</sub>H<sub>13</sub>Cl<sub>2</sub>N<sub>3</sub>O<sub>2</sub>  
Molecular Weight: 338.19  
Storage: Powder      -20°C    3 years  
                                  4°C      2 years  
                                  In solvent   -80°C    6 months  
  -20°C    1 month

Chemical Structure:



### ANALYTICAL DATA

Appearance: Off-white to light yellow (Solid)  
LCMS: Consistent with structure  
Purity (LCMS): 99.80%  
Conclusion: The product has been tested and complies with the given specifications.

**Caution: Product has not been fully validated for medical applications. For research use only.**

Tel: 609-228-6898

Fax: 609-228-5909

E-mail: tech@MedChemExpress.com

Address: 1 Deer Park Dr, Suite Q, Monmouth Junction, NJ 08852, USA