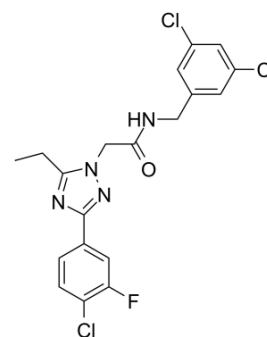


MR-L2

Cat. No.:	HY-128358
Molecular Formula:	C ₁₉ H ₁₆ Cl ₃ FN ₄ O
Molecular Weight:	441.71
Target:	Phosphodiesterase (PDE)
Pathway:	Metabolic Enzyme/Protease
Storage:	Please store the product under the recommended conditions in the COA.



BIOLOGICAL ACTIVITY

Description

MR-L2 is a reversible and noncompetitive allosteric activator of long-isoform **phosphodiesterase-4 (PDE4)**, activates representative PDE4 long-isoform variants (PDE4A4, PDE4B1, PDE4C3, PDE4D5). MR-L2 suppresses PGE2-induced MDCK cell cyst formation with an EC₅₀ of 1.2 μM^[1].

IC₅₀ & Target

PDE4^[1]

REFERENCES

[1]. Omar F, et al. Small-molecule allosteric activators of PDE4 long form cyclic AMP phosphodiesterases. Proc Natl Acad Sci U S A. 2019 Jul 2;116(27):13320-13329.

Caution: Product has not been fully validated for medical applications. For research use only.

Tel: 609-228-6898

Fax: 609-228-5909

E-mail: tech@MedChemExpress.com

Address: 1 Deer Park Dr, Suite Q, Monmouth Junction, NJ 08852, USA