

File ..1018 2019-10-18 08-29-16\LP7135-059-1_2.D Tgt Mass (CHM):

Injection Date : 18 Oct 19 1:29 pm +0800 Seq. Line : 71

Sample Name : LP7135-059-1_2 Location : PL-D-10

Acq. Operator : SYSTEM Inj : 1

Spec. Reported : MS Integration Inj Volume : 1 ul

Acq. Method : D:\LCMS03\Data\20191018\20191018 2019-10-18 08-29-16\1-POS-UPLC2.0MIN(Neutral)

Analysis Method : D:\LCMS03\Data\20191018\20191018 2019-10-18 08-29-16\1-POS-UPLC2.0MIN(Neutral)

Catalog No : HY-128359 Batch#47573

Method Info : Mobile Phase: A: water B:ACN

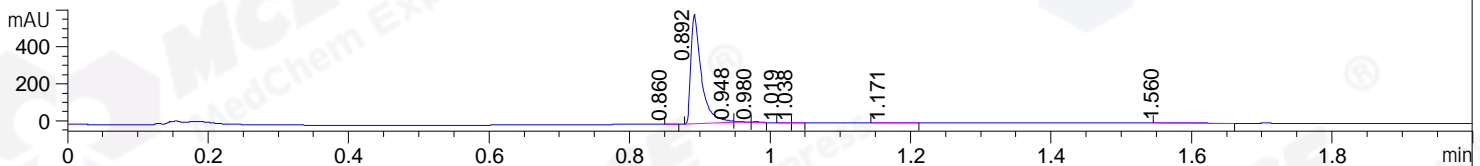
Gradient: 5% to 95%B within 0.8 min

Flow Rate :1.0ml/min

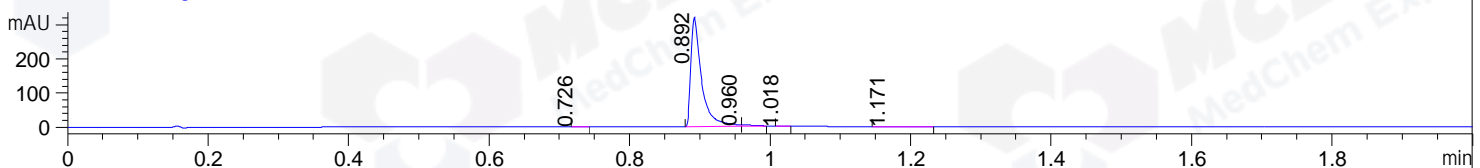
Column :Poroshell 120 EC- C18, 2.1*50mm,1.9um A-RP-463

Oven Temperature : 45C

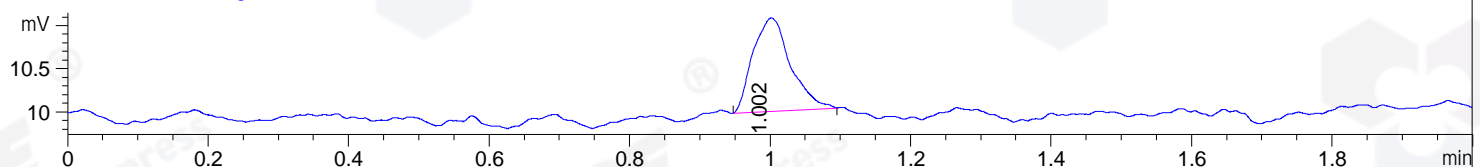
DAD1 A, Sig=214,4 Ref=off



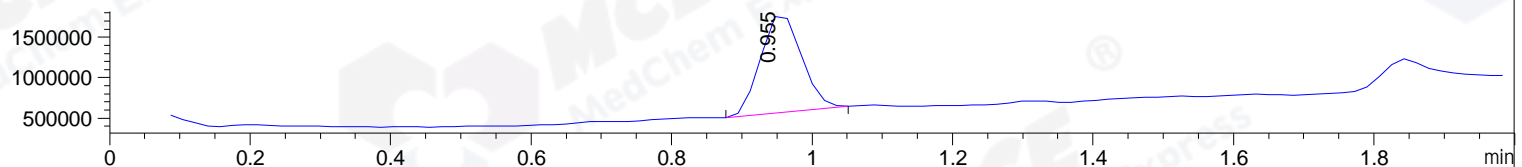
DAD1 B, Sig=254,4 Ref=off



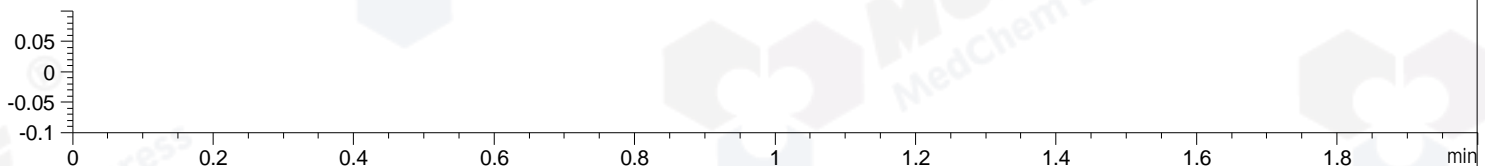
ELS1 A, ELSD Signal



MSD1 TIC, MS File ES-API, Pos, Scan, Frag: 70



Ion 1, MSD1 1, Target Mass 0 +H Positive, EIC=0.7:1.7



Integration Results for DAD1 A, Sig=214,4 Ref=off

RetTim	Width	Area	Height	Area%	MS (+)
0.86	0.01	0.46	0.91	0.07	114
0.89	0.02	616.38	593.95	98.28	469
0.95	0.01	4.32	6.98	0.69	469
0.98	0.01	1.46	2.49	0.23	469
1.02	0.01	0.55	0.96	0.09	114
1.04	0.01	0.31	0.64	0.05	114
1.17	0.03	1.72	0.84	0.28	114
1.56	0.01	1.99	2.48	0.32	114

Integration Results for DAD1 B, Sig=254,4 Ref=off

RetTim	Width	Area	Height	Area%	MS (+)
0.73	0.01	0.21	0.37	0.06	114
0.89	0.02	341.82	321.15	98.21	469
0.96	0.02	5.14	3.93	1.48	469
1.02	0.01	0.29	0.51	0.08	114
1.17	0.03	0.60	0.28	0.17	114

Integration Results for ELS1 A, ELSD Signal

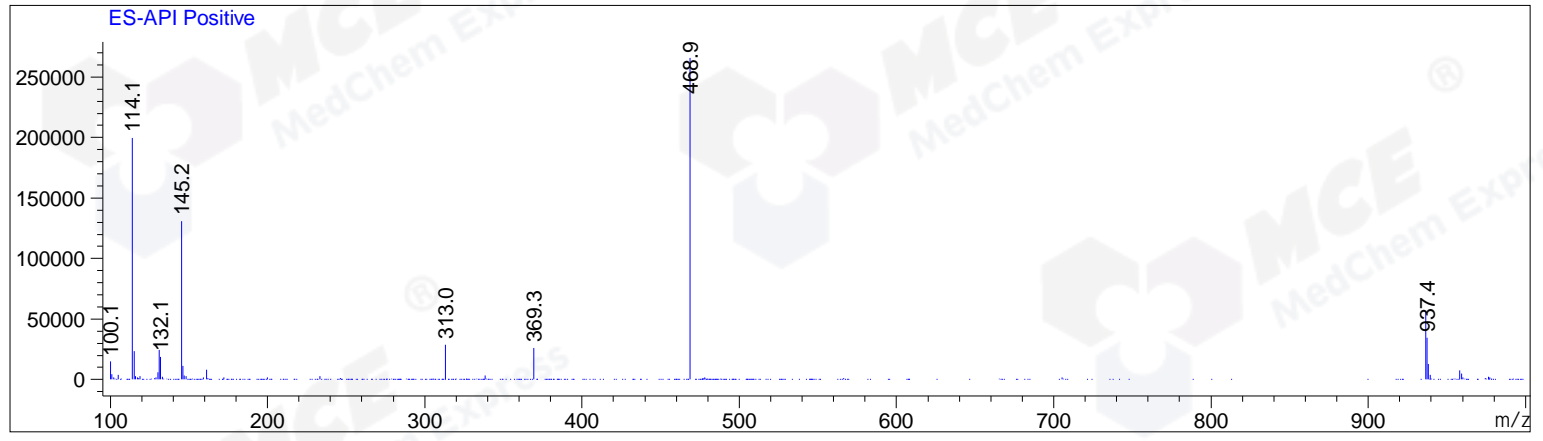
RetTim	Width	Area	Height	Area%	MS (+)
1.00	0.06	4.03	1.08	100.00	469

Integration Results for MSD1 TIC, MS File

RetTim	Width	Area	Height	Area%	MS (+)
0.96	0.07	4901124.50	1229879.38	100.00	469

Ret. Time: 0.96

<<<< POSITIVE SPECTRA >>>>



*** End of Report ***