

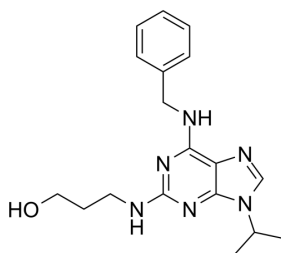
Bohemine

Cat. No.: HY-12843
 CAS No.: 189232-42-6
 Batch No.: 150573
 Chemical Name: 1-Propanol, 3-[[9-(1-methylethyl)-6-[(phenylmethyl)amino]-9H-purin-2-yl]amino]-

PHYSICAL AND CHEMICAL PROPERTIES

Molecular Formula: $C_{18}H_{24}N_6O$
 Molecular Weight: 340.42
 Storage: Powder -20°C 3 years
 In solvent -80°C 6 months
 -20°C 1 month

Chemical Structure:



ANALYTICAL DATA

Appearance: White to off-white (Solid)
 1H NMR Spectrum: Consistent with structure
 LCMS: Consistent with structure
 Purity (LCMS): 98.93%
 Conclusion: The product has been tested and complies with the given specifications.

Caution: Product has not been fully validated for medical applications. For research use only.

Tel: 609-228-6898

Fax: 609-228-5909

E-mail: tech@MedChemExpress.com

Address: 1 Deer Park Dr, Suite Q, Monmouth Junction, NJ 08852, USA