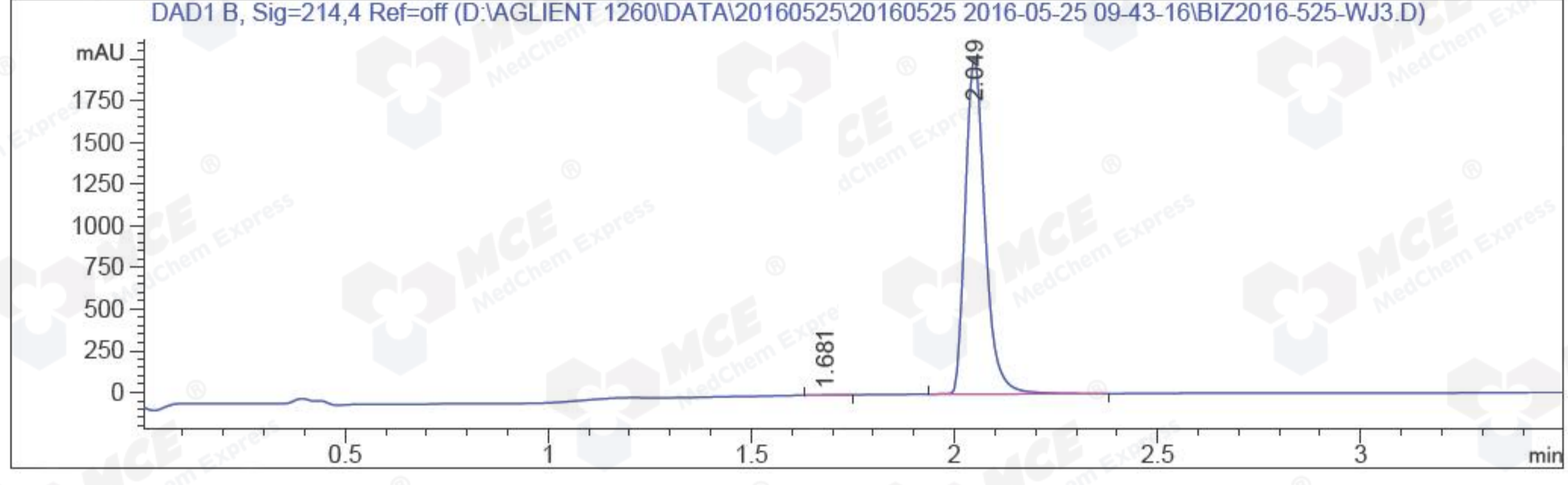


```
=====
Acq. Operator   : Su Xiao Ying(LCMS-02)          Seq. Line :   53
Acq. Instrument : HY-LCMS-02                    Location  : P1-B-03
Injection Date  : 5/25/2016 2:26:30 PM          Inj       :    1
                                                    Inj Volume: 3.000 µl
Acq. Method     : D:\AGLIENT 1260\DATA\20160525\20160525 2016-05-25 09-43-16\100-1000MS+3MIN-
                1.5_(0.02%FA).M
Last changed    : 5/25/2016 9:43:16 AM by Su Xiao Ying(LCMS-02)
Analysis Method : D:\AGLIENT 1260\DATA\20160525\20160525 2016-05-25 09-43-16\100-1000MS+3MIN-
                1.5_(0.02%FA).M (Sequence Method)
Last changed    : 5/25/2016 2:43:54 PM by Su Xiao Ying(LCMS-02)
                (modified after loading)
Method Info     : HY-365_5H01RS,M,A-RP-108, 210nm,23min
Catalog No     : HY-12863 Batch#20532
                A-RP-134
=====
```

Additional Info : Peak(s) manually integrated



Area Percent Report

```
=====
Sorted By      : Signal
Multiplier     : 1.0000
Dilution      : 1.0000
Do not use Multiplier & Dilution Factor with ISTDs
=====
```

Signal 1: DAD1 B, Sig=214,4 Ref=off

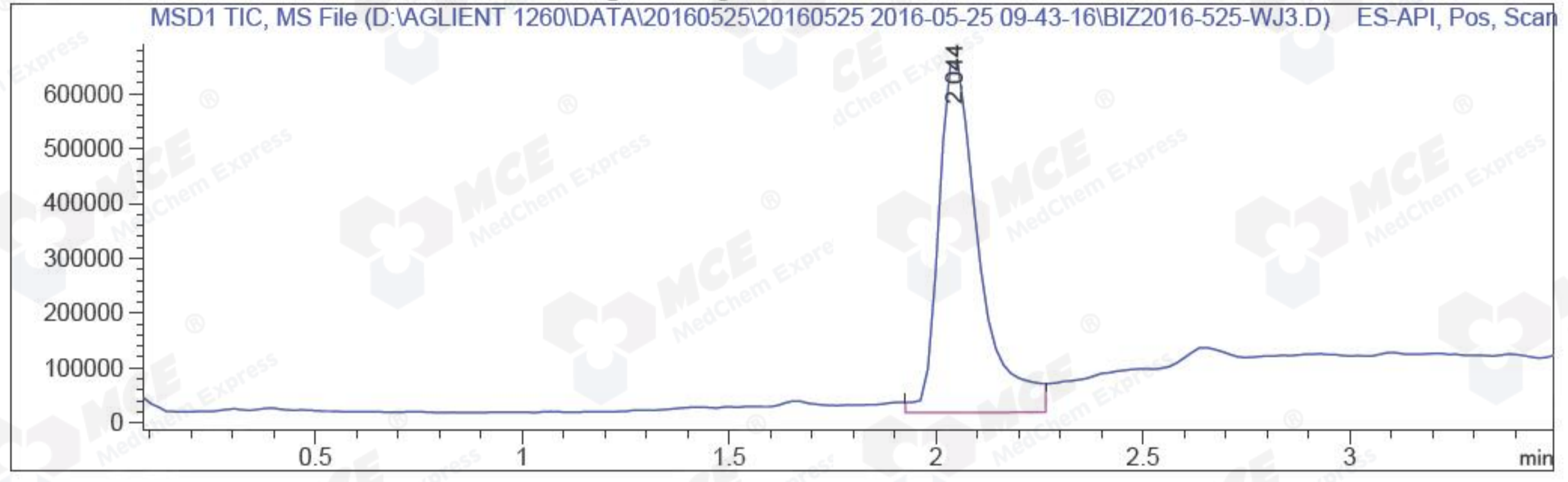
Peak #	RetTime [min]	Type	Width [min]	Area [mAU*s]	Height [mAU]	Area %
1	1.681	MM	0.0563	8.14628	2.41111	0.1187
2	2.049	MM	0.0558	6853.09326	2045.65479	99.8813

Totals : 6861.23954 2048.06589

*** End of Report ***

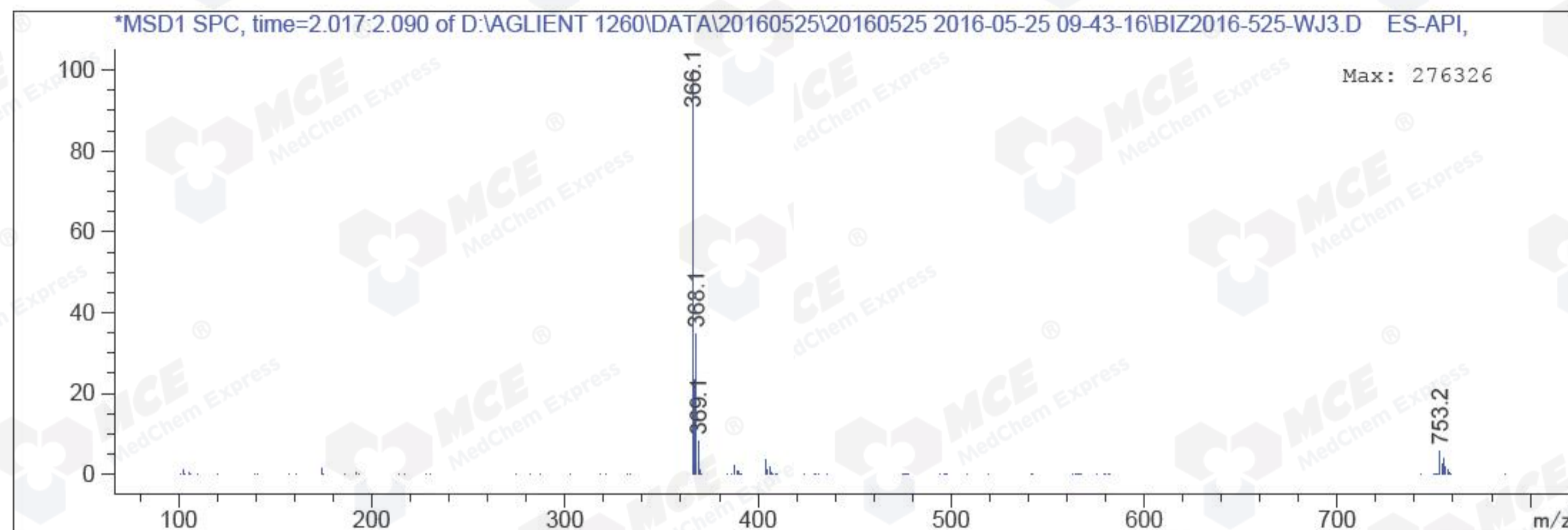
=====
Acq. Operator : Su Xiao Ying(LCMS-02) Seq. Line : 53
Acq. Instrument : HY-LCMS-02 Location : P1-B-03
Injection Date : 5/25/2016 2:26:30 PM Inj : 1
Inj Volume : 3.000 µl
Acq. Method : D:\AGLIENT 1260\DATA\20160525\20160525 2016-05-25 09-43-16\100-1000MS+3MIN-1.5_(0.02%FA).M
Last changed : 5/25/2016 9:43:16 AM by Su Xiao Ying(LCMS-02)
Analysis Method : D:\AGLIENT 1260\DATA\20160525\20160525 2016-05-25 09-43-16\100-1000MS+3MIN-1.5_(0.02%FA).M (Sequence Method)
Last changed : 5/25/2016 2:42:44 PM by Su Xiao Ying(LCMS-02)
(modified after loading)
Method Info : HY-365_5H01RS,M,A-RP-108, 210nm,23min
Catalog No : HY-12863 Batch#20532
A-RP-134

Additional Info : Peak(s) manually integrated



MS Signal: MSD1 TIC, MS File, ES-API, Pos, Scan, Frag: 50
Spectra averaged over upper half of peaks.
Noise Cutoff: 1000 counts.
Reportable Ion Abundance: > 10%.

Retention Time (MS)	MS Area	Mol. Weight or Ion
2.044	4381549	368.10 I
		367.10 I
		366.10 I



*** End of Report ***